



Image Article

Evaluation of Fine Structure in Neurological Images

Natalia Jones*

International Research Journals Publishing House, Sapele, Nigeria.

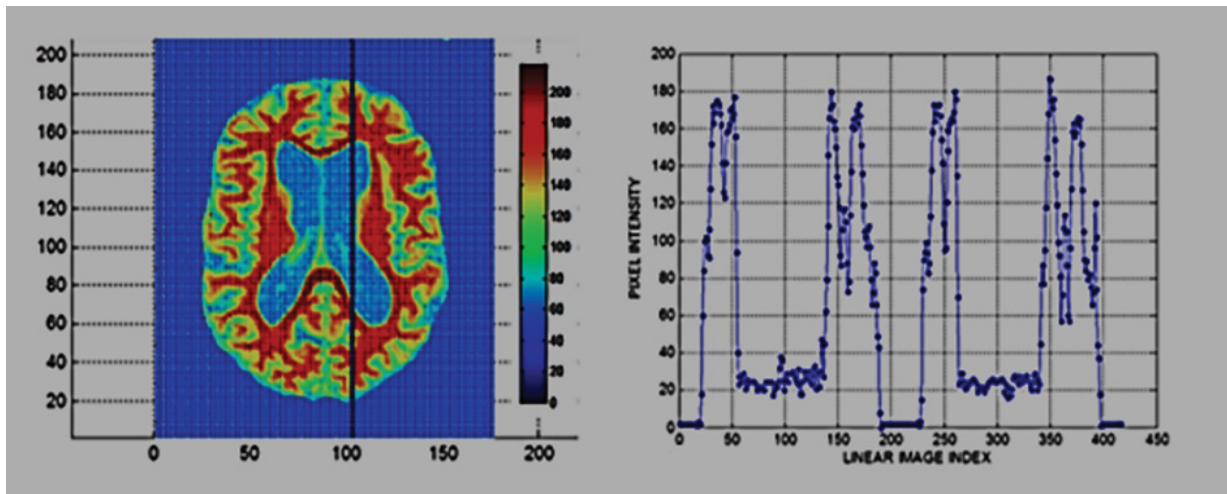


Figure 1: This figure demonstrates how a single column which can be used in a regression model of the image is generated by stacking image columns of pixels. The image displayed is 208 by 176 pixels, so a single column of $208 \times 176=36608$ pixels will create the entire image. A topic classified as demented is an MR scan image. The 2 vertical lines determine the intensity of the pixels that are joined as a column. A 416 pixel intensity column consisting of the first vertical line joined by the second vertical line creates a time series-like data collection of intensities indexed by the indices of the image row.