

Full Length Research Paper

Diversity of legume nodulating bacteria as key variable of coffee agro-ecosystem productivity

Rusdi Evizal^{1*}, Irfan D. Prijambada², Jaka Widada², Donny Widiyanto² and Tohari³

¹Department of Agrotechnology, Faculty of Agriculture, University of Lampung, Bandar Lampung, Indonesia

²Department of Microbiology, Faculty of Agriculture, Gadjah Mada University, Yogyakarta, Indonesia

³Department of Agronomy, Faculty of Agriculture, Gadjah Mada University, Yogyakarta, Indonesia

Abstract

The high diversity of Legume Nodulating Bacteria (LNB) was found in soil of agro-ecosystem of legume trees that has been established for long time. Incorporating legume trees as shading in coffee agro-ecosystems would conserve LNB diversity and provide ecosystem services such as N fixation, dynamic shading, and nutrient cycling. The aim of the experiment was to determine whether legume shaded coffee agro-ecosystems have higher LNB diversity and higher coffee productivity than those of non-legume or sun (no shade) coffee agro-ecosystem. The experiment was conducted in West Lampung District, Indonesia, through out survey and experimental plot of coffee agro-ecosystems consisted of 4-5 years old coffee plot and a quassy experiment plot of 15-16 years old coffee. Types of coffee agroecosystems to be examined were *Coffea canephora* with shading of legume trees of *Gliricidia sepium* and *Erythrina sububrams*, non-legume shade trees of *Michelia champaca*, and sun coffee (without shade tree). The results showed that coffee agro-ecosystems shaded by legume trees had higher LNB diversity than those of coffee agro-ecosystems shaded by nonlegume trees (*Michelia champaca*) and coffee agro-ecosystem without shade trees. Diversity of legume nodulating bacteria in the soil may indicate productivity of coffee agro-ecosystems.

Keywords: LNB diversity, Legume tree, Coffee agro-ecosystem, Productivity.

INTRODUCTION

Nitrogen fertilization is a key factor for coffee production but creates environmental problems such as water contamination through nitrate leaching (Harmand et al., 2007). Nitrogen is the most limiting nutrient for the productivity of coffee agro-ecosystem. Relying on nitrogen fertilization may costly due to high price of nitrogen fertilizer and low efficiency of fertilization which only 30-40% is absorbed by the coffee plants. Shade tree is a key factor for improving coffee productivity (Vaast et al., 2005). Incorporating shade trees in coffee agro-ecosystem reduces nitrate leaching (Babbar and Zak 1995), reduces weed growth (Senarathne and Perera 2011), increases organic matter input through litter fall, absorbs nutrients by deep roots, generates N fixation by root nodule of legume trees (Tscharnitke et al., 2011;

Young 1990) and leads to reduction on N fertilization in coffee agro-ecosystem (Wintgens 2004) and improves coffee production sustainability (Vaast et al., 2005).

Biological nitrogen fixation is mainly carried out by in legume nodulating bacteria (Herridge et al., 2008). The majority of studies on N fixing bacteria focused on growth characteristics, nodulation capacity, and N fixing efficiency but legume nodulating bacteria (LNB) diversity is poorly performed (Lavay and Burdon 2007). Mwangi et al. (2011) found less diversity of LNB in agroforestry with no legume trees. Rodriguez-Echeverria et al. (2007) reported that high diversity of LNB was found in soil of agro-ecosystem of legume trees that has been established for long time. Bala et al. (2003) found high diversity of LNB in soil of agroforestry legumes from the tropical continents. The success of the tree legumes growth in the tropical continents is the result of their relative promiscuity allowing nodulation with diverse indigenous rhizobial types. Lafay and Burdon (2007) concluded that tropical areas are centres of LNB

*Corresponding Author Email: rusdievizal@yahoo.com.

biodiversity. Hsu and Buckley (2009) found positive relation between diversity of diazotroph bacteria and rate of N fixation.

Method of ribosomal intergenic spacer analysis (RISA) has been successful to discriminate close relatives of bacteria. Intergenic spacer to be amplified has different size of base pairs as seen by silver staining (Ranjard et al., 2001). Molecular analysis of bacterial diversity could be done by DNA extracting from samples such as soil, water, and media culture (Gabor et al., 2002). In this study, nodules of Siratro planted in soils of coffee agro-ecosystems were used to extract DNA of nodulating bacteria. The objective of the research was to determine whether legume shaded coffee agro-ecosystems have higher LNB diversity and higher coffee productivity than those of non-legume or sun (no shade) coffee agro-ecosystem.

MATERIALS AND METHODS

Plot Experiment

The research was based on survey and experimental plot of coffee agro-ecosystems, conducted at benchmark of Conservation and Sustainable Management of Below-Ground Biodiversity (CSM-BGBD), in Sumberjaya Subdistrict, West Lampung, Indonesia, situated at 4°64' – 5°10'S and 104°15' – 104°20'E. Types of coffee agro-ecosystems to be examined were *Coffea canephora* with shade trees of *Gliricidia sepium*, *Erythrina sububrams*, *Michelia champaca*, and sun coffee (without shade tree). Two plots consisted of 4-5 years coffee and 15-16 years coffee were established.

In experimental plot 1, shrub was cleared and Robusta coffee seedlings were planted with four shade treatments as mentioned above. The experiment used randomized complete block design (RCBD) with three replications. Coffee trees spaced at 2 x 2 m while shade trees spaced at 4 x 4 m. Fertilizer dose of 75-25-50 kg ha⁻¹ of NPK was applied. Plot 2 was a quassy experiment of mature Robusta coffee fields of 15-16 years old with the same types of shade trees. Fertilizer of NPK (150-50-100 kg ha⁻¹) was applied (Evizal et al., 2012).

Productivity and Soil Analysis

Harvesting was conducted at age of 4 and 5 years for young coffee and at age of 15 and 16 years for mature coffee trees. Coffee productivity was calculated based on yield of fresh bean per plot (Hagggar et al., 2011). Biomass production was determined based on the production of litter fall, pruning of coffee and shade trees, and weed harvesting. Litter fall was sampled using 3 litter traps of 1x2 m wide per plot. Standing litter and weed biomass was sampled base on quadrant of 1x1 wide

(Evizal et al., 2009). Weed biomass was harvested every 3 months before weeding. At each plot replications, soils were sampled at 0-20 cm depth to analyze diversity of legume nodulating bacteria (LNB) and content of organic C (Walkley and Black) and total soil N (Kjeldahl).

Nodulation and N fixation Activity

Siratro (*Macroptilium atropurpureum*) was used to trap nodulating bacteria from soil of different type of coffee agro-ecosystems. Seedlings were grown in plastic pouch filled with free N medium of Fahreus. After 2 months, nodules were harvested. N fixation activity was measured by method of *Acetylene Reducing Assay* (Hsu and Buckley, 2009). Sampled nodules were put into venoject tub, added with 1 ml of acetylene and incubated for 3 hours. When incubation has completed, ethylene gas inside the venoject was analyzed using gas chromatography.

DNA Extraction

Nodule samples of siratro (0.3 g) were washed, soaked in 95% ethanol for 3 min, and soaked in 0.1% sublimate for 3 min. Using sterilized pin-set, nodules were broken and dissolved in 0.5 ml of sterile distilled water, centrifuged and settles for 5 minutes. Supernatant (0,4 ml) was harvested and filled in micro tubes of Fast DNA Spin Kit (Biomedical, USA) to extract DNA of bacteria following the protocol. Homogenization was done using Fast Prep 24 MP (Biomedical, USA) at the speed of 6,0 m sec⁻¹ for 40 sec.

Ribosomal Intergenic Spacer Analysis

To analyze LNB diversity, method of Ribosomal Intergenic Spacer Analysis (RISA) was used. The intergenic spacer region on bacteria DNA was amplified in 20 µl PCR mixtures of 10 µl Mega-Mix-Blue (Microzone, UK), 6 µl sterile distilled water, 1 µl each of 1406F and 23sR primer (25 pmol/µl), 2 µl DNA (25 ng/µl). DNA was amplified in a GeneAmp PCR System 9700 (Biosystems, USA) as follows: denaturation of DNA at 95°C for 5 min; 30 cycles of denaturation (95°C for 1 min), annealing (53°C for 45 sec), and elongation (72°C for 1 min 30 sec) with final elongation time of 7 min at 72°C. The product of RISA were analyzed in 8% Polyacrilamide Gel Electrophoresis (PAGE).

Data Analysis

Intensity of PAGE bands as representation of Operational Taxonomic Unit (OTU) (Cetecioglu et al., 2009) were

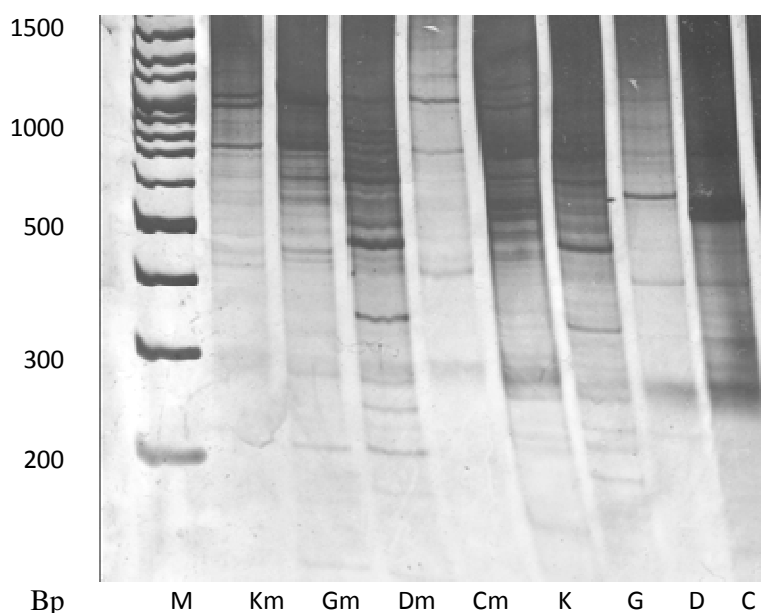


Figure 1. The profile of LNB diversity in the soil of 5 years coffee agro-ecosystems (Km, Gm, Dm, Cm = no shade, *G. sepium* shade, *E. sububrams* shade, *M. champaca* shade) and 15 years coffee agro-ecosystems (K, G, D, C = no shade, *G. sepium* shade, *E. sububrams* shade, *M. champaca* shade), M = marker

Table 1. Shannon-Weaver diversity indices of LNB from coffee agro-ecosystems based on RISA

Coffee agro-ecosystems	Shannon diversity indices	
	Coffee 5 years	Coffee 15 years
No shade	2.7883 a	2.5770 B
<i>G. sepium</i> shade	2.8125 a	2.9112 A
<i>E. sububrams</i> shade	2.8834 a	3.0056 A
<i>M. champaca</i> shade	2.8194 a	2.7098 B

Note: Within column, means followed by the same letter are not significantly different by Duncan's test at α 0.05

quantified by Adobe Photoshop software (Evizal et al., 2012). Using software of Biodiversity Analysis Package, Shannon-Weaver diversity indices (H') were calculated based on formula (Ge et al., 2008):

$$H' = - \sum p_i (\ln p_i) \text{ where}$$

$$p_i = n/N$$

n = intensity of *operational taxonomic unit* (OTU)

N = total intensity of OTU.

Analysis of variance and Duncan multiple range test was done using SAS software. Cluster analysis was done using NTSys software. Regression analysis and t-test was done using SPSS software.

RESULTS AND DISCUSSION

The result showed that types of coffee agro-ecosystems affected diversity of legume nodulating bacteria (LNB)

that extracted from sample nodules (Figure 1). Based on Shannon diversity indices, diversity of LNB in the soil of 15-years-old coffee agro-ecosystem shaded with legume trees was higher than those of coffee agro-ecosystem shaded with non-legume trees or without shade trees. In the soil of 5-years-old coffee agro-ecosystems, diversity of LNB was not significantly different (Table 1). The roots of legume trees as shade of new planting coffee agro-ecosystems (5 years old) has not grown vigorously yet, and nodulation was found only 1 m around the trunk. Mwangi et al., (2011) reported that agroforestry systems of legume trees that have been established for long time, had higher diversity of LNB than those of new establishment of legume trees or no legume trees.

Shaded coffee agro-ecosystems had higher LNB diversity than no shade coffee agro-ecosystems. Coffee agro-ecosystems shaded by legume trees had higher LNB diversity than those of coffee agro-ecosystems

Table 2. Contrast test of LNB diversity from 15-year-old coffee agro-ecosystems

Contrast among agro-ecosystems	F calculated	Significant
No shade vs with shade	86.032	**
Legum shade vs nonlegum shade	56.159	**
<i>G. sepium</i> shade vs <i>E. sububrams</i> shade	4.249	ns

Note: ** Significant at $\alpha=0.01$, ns = no significant at $\alpha 0.05$

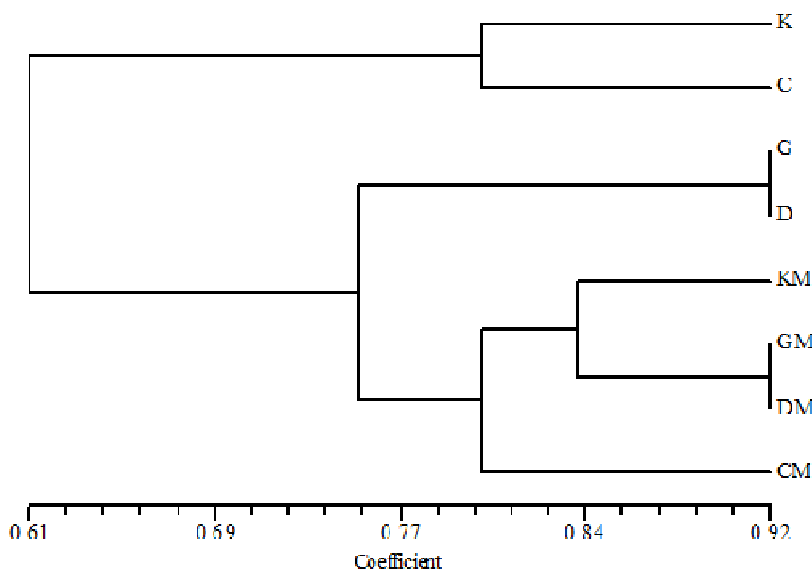


Figure 2. Dendrogram of LNB diversity in soil of 5 years coffee agro-ecosystems (Km, Gm, Dm, Cm = no shade, *G. sepium* shade, *E. sububrams* shade, *M. champaca* shade) and 15 years coffee agro-ecosystems (K, G, D, C = no shade, *G. sepium* shade, *E. sububrams* shade, *M. champaca* shade).

Table 3. N fixation activity of siratro nodules based on ARA

Coffee agro-ecosystems	N fixation (mmol h ⁻¹ g ⁻¹)**
Coffee 5 year no shade	0.4398 cd
Coffee 5 year <i>G. sepium</i> shade	1.0193 b
Coffee 5 year, <i>E. sububrams</i> shade	0.8086 bc
Coffee 5 year, <i>M. champaca</i> shade	0.4838 cd
Coffee 15 year, no shade	0.3318 d
Coffee 15 year, <i>G. sepium</i> shade	1.5853 a
Coffee 15 year, <i>E. sububrams</i> shade	0.9253 b
Coffee 15 year, <i>M. champaca</i> shade	0.4132 cd

Note: Means followed by the same letter are not significantly different by Duncan's test at $\alpha 0.05$

shaded by nonlegume trees (*Michelia champaca*). Table 2 showed the contrast test of LNB diversity among types of coffee agro-ecosystems. Between legume tree coffee agro-ecosystems, there was no significant different between LNB diversity of *G. sepium* and *E. Sububrams* – coffee agro-ecosystem.

Based on LNB diversity, the dendrogram of cluster analysis (Figure 2) supported the same finding that: (1) Agro-ecosystems of 5 years old coffee gathered in a

cluster, (2) agro-ecosystems of 15 years coffee separated in cluster of legume shade trees and cluster of non-legume shade tree and no shade tree, (3) coffee agro-ecosystem of *G. sepium* and *E. sububram* had high similarity level of LNB diversity.

N fixation activity of siratro nodules showed in Table 3. LNB from *G. sepium* shade coffee agro-ecosystem had high activity, followed by LNB from *E. sububram* shade coffee agro-ecosystem, non-legume shade (*M.*

Table 4. Coffee productivity in average of year 15-16 harvesting

Coffee agro-ecosystems	Coffee productivity (kg ha ⁻¹)
No shade	641.01 C
<i>G. sepium</i> shade	822.36 B
<i>E. sububrams</i> shade	961.52 A
<i>M. champaca</i> shade	512.13 C

Note: Means followed by the same letter are not significantly different by Duncan's test at α 0.05

Table 5. Linear regression of some variables on coffee production

Variables	Coefficient	t calculated	Significant
Constant	-5.708	-1.466	0.161
Shannon Weaver diversity indexes of LNB (Ln)	3.325***	5.431	0.000
Weed productivity (Ln kg/ha)	0.888***	5.353	0.000
Soil organic C (Ln %)	0.74**	2.527	0.022
Soil total N (Ln %)	-1.099**	-2.730	0.041
Total biomass (Ln kg/ha/thn)	-0.141 ^{ns}	-0.334	0.742
Standing litter (Ln ton/ha)	0.308*	1.854	0.081
F calc (signification)		19.943 (0.000)	
R ²		0.876	

Note: ns = non significant

champaca) and no shade or coffee agro-ecosystem. This suggested that bacteria formed nodule of siratro was able to form nodule with legume shade trees. Evizal et al., (2010) reported that nodules of *G. sepium* had higher N fixation activity than nodules of *E. sububrams*, but *E. sububrams* trees form bigger nodules and produced more nodules (total fresh or dry weight). Furthermore, *E. sububrams* trees produced more abundance of litter fall than *G. sepium* trees that affected the coffee yield.

Types of agro-ecosystems had not significant effect on bean productivity of 5-6 years old coffee agro-ecosystems. Table 4 showed the productivity of bean coffee from different types of 15-16 years coffee agro-ecosystems. Types of agro-ecosystems influenced the productivity of 15-16 year old coffee. Both coffee agro-ecosystems with legume shade trees had higher productivity than those of non legume or no shade trees. Beside its capacity of N fixing, legume trees also produced abundance N from litter fall and provided suitable shading for coffee (Evizal et al., 2009). Productivity of coffee agro-ecosystem shaded by *E. sububrams* was higher than those of coffee agro-ecosystem shaded by *G. sepium*.

Table 5 showed linear multiple regression of some variables on coffee productivity. Diversity of LNB together with weed productivity, soil organic C, and standing litter had positive regression on coffee productivity. In contrast, related to LNB diversity, soil total N had negative regression on coffee productivity. Palmer and Young (2000) reported that soil N content had negative effect on diversity of LNB in soil. This result suggested that maintaining of weed biomass (by proper weeding), soil organic C, and standing litter (as representative of litter

fall) was significant for high productivity of coffee agro-ecosystems. Diversity of legume nodulating bacteria (LNB) in the soil may indicate productivity of coffee agro-ecosystems.

CONCLUSION

Coffee agro-ecosystems shaded by legume trees had higher LNB diversity than those of coffee agro-ecosystems shaded by nonlegume trees (*Michelia champaca*) and coffee agro-ecosystem without shade trees. Diversity of LNB together with weed productivity, soil organic C, and standing litter had positive regression on coffee productivity. Diversity of LNB in the soil may indicate productivity of coffee agro-ecosystems.

ACKNOWLEDGEMENT

We thank Project of Below-Ground Biodiversity (BGBD) Indonesia and Directorate General of Higher Education, Republic of Indonesia, for supporting the research funding.

REFERENCES

- Babbar LI, Zak DR (1995). Nitrogen loss from coffee agroecosystems in Costa Rica: Leaching and denitrification in the presence and absence of shade trees. *J. Envir. Qual.* 24: 227-233.
- Bala A, Murphy P, Giller KE (2003). Distribution and diversity of rhizobia nodulating agroforestry legumes in soils from three continents in the tropics. *Molecular Ecology* 12: 917-930.

- Cetecioglu Z, Ince BK, Kolukirik M, Ince O (2009). Biogeographical distribution and diversity of bacterial and archaeal communities within highly polluted anoxic marine sediments from the Marmara sea. *Marine Pollution Bulletin* 58:384-295.
- Evizal R, Tohari, Prijambada ID, Widada J, Widiyanto D (2009). Biomass production of shade-grown coffee agroecosystems. *Proc. International Seminar on Biomass Production and Utilization: Challenges and Opportunities*. The University of Lampung.
- Evizal R, Tohari, Prijambada ID, Widada J, Widiyanto D (2010). Assessment of legumes as coffee shading trees based on genetic diversity, productivity, and activity of its root nodules. *Proc. National Seminar on Below-ground Biodiversity I*. The University of Lampung (In Bahasa Indonesia).
- Evizal R, Tohari, Prijambada ID, Widada J, Widiyanto D (2012). Soil bacterial diversity and productivity of coffee-shade tree agroecosystems. *J. Trop. Soils* 17(2): 183-187.
- Gabor EM, de Vries EJ, Janssen DB (2002). Efficient recovery of environmental DNA for expression cloning by indirect extraction methods. *FEMS Microbiol. Ecol.* 1486:1-11.
- Ge Y, He J, Zhu Y, Zhang J, Xu Z, Zhang L, Zheng Y (2008). Differences in soil bacteria diversity: Driven by contemporary disturbances or historical contingencies? *The ISME Journal* 2: 254-264.
- Haggar J, Barrios M, Bolanas M, Merlo M, Morago P, Munguia R, Ponce A, Romero S, Soto G, Staver C, Virgino EMF (2011). Coffee agroecosystem performance under full, shade, conventional and organic management regimes in Central America. *Agroforest Syst.* 82: 285-301.
- Harmand J, Avila H, Dambrine E, Skiba U, de Miguel S, Renderos RV, Oliver R, Jimenez F, Beer J (2007). Nitrogen dynamics and soil nitrate retention in a *Coffea arabica* – *Eucalyptus deglupta* agroforestry system in Southern Costa Rica. *Biogeochemistry* 85: 125-139.
- Herridge DF, People MB, Boddey RM (2008). Global input of biological nitrogen fixation in agricultural systems. *Plant Soil* 311:1-18.
- Hsu S, Buckley DH (2009). Evidence for the functional significance of diazotroph community structure in soil. *The ISME Journal* 3:124-136.
- Lafay B, Burdon JJ (2007). Molecular diversity of legume root-nodule bacteria in Kakadu National Park, Northern Territory, Australia. *PLoS ONE* 2:1-5.
- Mwangi SN, Karanja NK, Boga H, Kahindi JHP, Muigai A, Odee D, Mwenda GM (2011). Genetic diversity and symbiotic efficiency of legume nodulating bacteria from different land use systems in Taita Taveta, Kenya. *Trop. Subtrop. Ecosystems* 13:109-118.
- Palmer KM, Young JPW (2000). Higher diversity of *Rhizobium leguminosarum* Biovar *Viciae* populations in arable soils than in grass soils. *Appl. Environ. Microbiol.* 66:2445-2450.
- Ranjard L, Poly F, Lata JC, Mougel C, Thioulouse J, Nazaret S (2001). Characterization of bacterial and fungal soil communities by automated ribosomal intergenic spacer analysis fingerprints: Biological and methodological variability. *Appl. Environ. Microbiol.* 67:4479-4487.
- Rodriguez-Echeverria S, Crisostomo JA, Freitas H (2007). Genetic diversity of rhizobia associated with *Acacia longifolia* in two stage of invasions of coastal sand dunes. *Appl. Environ. Microbiol.* 73:5066-5070.
- Senarathne SHS, Perera KCP (2011). Effect of several weed control methods in tropical coconut plantation and weed abundance coconut yield and economical value. *Int. Res. J. Plant Sci.* 2(2):25-31.
- Tscharntke T, Clough Y, Bhagwat SA, Buchori D, Faust H, Hertel D, Holscher D, Juhbandt J, Kessler M, Perfecto I, Scherber C, Schroth G, Veldkamp E, Wanger TC (2011). Multifunctional shade tree management in tropical agroforestry landscapes – a review. *J. Appl. Ecol.* 48(3):619–629.
- Vaast P, van Kanten R, Siles P, Dzib B, Franck N, Harmand JM, Génard M (2005). Shade: A key factor for coffee sustainability and quality. *Proc. 20th International Conference on Coffee Science*. ASIC, 887-896.
- Wintgens JN (Ed) (2004). *Coffee: growing, processing, sustainable production*. Wiley-VCH. Weinheim.
- Young A (1990). *Agroforestry for soil conservation*. CAB International. Wallingford.