



Case Report and Review

Cellular and molecular mechanisms of the enhanced survival benefits of the β_1 -adrenoceptor biased agonist, carvedilol, in diabetic cardiomyopathy with heart failure: a case report and literature review

^{1*}S. E. Oriaifo, ²N. Oriaifo, ³M. Oriaifo, ⁴C. Iruolagbe, ⁵E. O. Okogbenin, ⁶E. K. I. Omogbai

¹Dept. of Pharmacology and Therapeutics, AAU, Ekpoma, Edo State, Nigeria

²Dept. of Obstetrics and Gynaecology, ISTH, Irrua, Edo State, Nigeria

³Dept. of Radiology, ISTH, Irrua, Edo State, Nigeria

⁴Dept. of Internal Medicine (Cardiology Unit), ISTH, Irrua, Edo State, Nigeria

⁵Dept. of Psychiatry, ISTH, Irrua, Edo State, Nigeria

⁶Dept. of Pharmacology and Toxicology, Faculty of Pharmacy, University of Benin, Benin-City, Nigeria

*Corresponding author's Email: stephenoriaifo@yahoo.com

Abstract

The incidence of diabetic cardiomyopathy, the leading cause of heart failure amongst diabetic patients, is on the increase in the same proportion with the ageing of the population. Reactive oxygen species (ROS) and mitochondrial dysfunction are front runners in the mechanisms of the pathobiology of diabetic cardiomyopathy. Carvedilol reverses mitochondria to nucleus stress signalling and the retrograde response to offer survival advantages over other beta adrenoceptor antagonists due to its peculiar mechanisms of action, especially its anti-oxidant effect which is tenfold above that of vitamin E. The nitric oxide and hydrogen sulphide dependent vasodilator carvedilol is a biased agonist at β_1 -adrenoceptors involving β_1 -arrestin-mediated downstream transactivation of the epidermal growth factor receptor (EGFR) and extra-cellular signal-regulated kinase (ERK) which signals to increase Akt-mediated cardioprotection, anti-apoptosis, mitochondrial biogenesis and insulin sensitivity. Upregulation of Transforming growth factor beta (TGF- β) activity and increased central sympathetic outflow by central neurons may be a sequel of increased superoxide generation from free fatty acids (FFA) and shear stress mediated uncoupling of endothelial nitric oxide synthase (eNOS), hyperglycaemic stress, ET-I activation and AT I_A-R upregulation. The anti-oxidant carvedilol reduces cardiac catecholamine toxicity by inhibition of ROS-mediated upregulation of central Rho_A and ROCK II kinase to decrease central sympathetic activation and baroreceptor imbalance while attenuating eNOS mRNA destabilisation. It thus successfully redresses the sympatho-cholinergic imbalance, chronotropic incompetence and enhanced arrhythmogenesis in heart failure. Carvedilol also blocks transforming growth factor-beta (TGF- β)-mediated calcineurin phosphatase activity and thus decreases extracellular matrix (ECM) accumulation and cardiac hypertrophy. This case report is of an elderly Nigerian male patient with diabetes induced dilated cardiomyopathy who responded well to active management with adjunctive carvedilol after the apparent non-response to adjunctive metoprolol. After 3 months on carvedilol treatment, ejection fraction rose from 39±2% to 45± 4% and there was also improvement in well-being as reflected in the Geriatric Depression Scale which fell from 14.20 ± 5 to 8.50 ± 4. Carvedilol may thus be the ideal beta-blocker for patients with diabetes mellitus with cardiomyopathy and deserves regular deployment.

Keywords: Diabetic cardiomyopathy, congestive heart failure, carvedilol, survival benefits, mechanisms.

INTRODUCTION

The prevalence of congestive heart failure (CHF) is increasing *pari passu* with the ageing of the population and it is the most rapidly growing cardiovascular disease worldwide (Silke, 2006) with mortality rates comparable with those for malignant disease. In tandem, there is also an absolute increase in the incidence of diabetes and its complications amongst adults aged 65 and older (Halter et al., 2014). Patients with CHF have an 8 year survival rate of 25% and suffer 1 million hospitalisations and 260,000 deaths annually from this condition in the U.S. (Wilkins and Molkenin, 2004). There is increased incidence of CHF in diabetic patients (Boudina and Abel, 2007; Refsgaard et al., 2002) even after correcting for confounding variables such as hypertension, obesity, hypercholesterolaemia and coronary artery disease and both diabetes and failing hearts may induce the same pattern of foetal gene expression (Hayat et al., 2004; Razeghi et al., 2001; Rosa et al., 2013). Clinical diabetic cardiomyopathy with CHF (Seferovic and Paulus, 2015) may induce a metabolic shift from mitochondrial respiration to glycolysis with attendant deficient ATP production (Wei et al., 2009). In diabetes, diastolic dysfunction (with preserved ejection fraction) occurs early and is made more apparent in the presence of hypertension (Boudina and Abel, 2007). Echocardiographic changes consistent with systolic dysfunction (reduced ejection fraction) and left ventricular hypertrophy which portend an increased risk for heart failure particularly in the presence of co-existing hypertension have also been described in diabetic populations. Investigators have pointed out that abnormalities of diastolic rather than systolic performance (Pacher, 1990) may be the more important determinant of the clinical status and exercise intolerance of patients with chronic heart failure.

The concept of diabetic cardiomyopathy

The concept of diabetic cardiomyopathy (DCM) as first introduced (Rubler et al., 1972) describes diabetes associated changes in the structure and function of the myocardium that is not directly attributable to other confounding factors such as coronary heart disease and hypertension (Chaval et al., 2013; Boudina and Abel, 2010). DCM is directly related to hyperglycaemia (Rubler et al., 1972). Diabetes promotes heart failure with two-thirds of patients with type 2 diabetes mellitus (DM) dying of heart failure. Though insulin therapy may be cardioprotective under a normoglycaemic state (Carvalho et al., 2011), hyperglycaemia, hyperinsulinaemia and intensive insulin therapy have prothrombotic effects (Lemkes et al., 2010), increase ceramide synthesis in skeletal muscle (Hansen et al., 2014) and increase the risk of cardiovascular dysfunction and the death rate by

twofold in patients with type 2 DM (Nichols et al., 2001; Kleinman et al., 1988). Chronic insulin stimulation degrades insulin receptor substrate 1 δ 2 (IRS 1 and IRS 2) proteins and causes insulin resistance *in vitro*. In tandem, excessive insulin signalling to Akt is detrimental for cardioprotection (Fullmer et al., 2013). Cardiac deletion of IRS1 and IRS2 prevents protein kinase B (Akt) – FOXO 1 phosphorylation, which serves as an indicator of insulin sensitivity, and causes cardiac dilatation and heart failure in mice (Qi et al., 2013; Fullmer et al., 2013; Zdychova and Komers, 2005). Cardiac inactivation of Akt after the loss of IRS1 and IRS2 may serve as a central mechanism for the induction of heart failure (HF).

Mechanisms of clinical diabetic cardiomyopathy

The mechanisms contributing to clinical DCM (Figure 1) include increased oxidative stress and cell death and may be represented in the following sequence: i) Hyperglycaemia and increase free fatty acid metabolism lead to overproduction of superoxide (ROS) by the mitochondrial electron transport chain which causes strand breaks in DNA. ii) Nuclear DNA strand breaks leads to poly (ADP-ribose) polymerase (PARP) activation which inhibits glyceraldehyde-3-phosphate dehydrogenase (GAPDH) by inducing the ADP-ribosylation of GAPDH. Activation of PARP is prevented by UCP-1; and GAPDH also plays a role in DNA repair. iii) The result of GAPDH inhibition and the increased expression of pyruvate dehydrogenase kinase 4 (PDK4) which attenuates pyruvate dehydrogenase (PDH) activity (Boudina and Abel, 2010; Hayat et al., 2004) is the increased flux of glycolytic intermediates through four metabolic pathways as follows, a) the aldose reductase or polyol pathway, b) the formation of advanced glycation end-products (AGEs) via the Maillard's reaction (Del Nogal-Avila et al., 2013), c) the formation of diacylglycerol, resulting in protein kinase C (PKC) activation, d) the increased flux via the hexosamine biosynthesis pathway (HBP) and generation of uridine N-acetyl-glucosamine (UDP-GINac), a substrate used for protein glycosylation. Increased Free fatty acid metabolism increases HBP flux by inhibition of glucose metabolism. O-linked glycosylation of proteins leads to altered transcription activity, for example, of the specificity protein 1 (SP1) group of transcription factors which regulates nucleus- and mitochondrial-encoded cytochrome C oxidase subunit genes, calcium homeostasis endoplasmic reticulum protein (CHERP) and cytosolic Ca^{2+} levels (Dhar et al., 2013; Johar et al., 2013). Altered transcriptional activity of SPs also results in an increase in transforming growth factor-1 beta-mediated upregulation of calcineurin-induced cardiac hypertrophy and plasminogen activator-inhibitor-1 (PAI-1)-

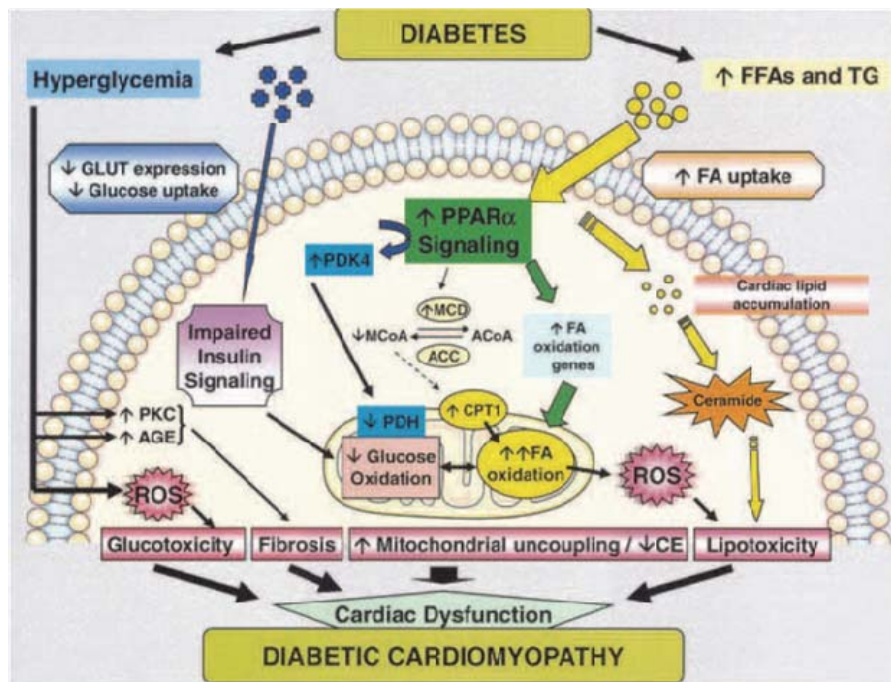


Figure 1: Mitochondrial Dysfunction In Type 2 Diabetes Mellitus Is Associated With Increased Generation of Reactive Oxygen Species (ROS) And Diabetic Cardiomyopathy.

Increased free FA (FFA) activates PPAR- signaling, leading to the increased transcription of many genes involved in FA oxidation. Increased FA oxidation leads to the generation of ROS at the level of the electron transport chain. ROS, which also can be generated by extramitochondrial mechanisms such as NADPH oxidase, plays a critical role in several pathways involved in the pathogenesis of diabetic cardiomyopathy, including central I sympathetic excitation via ROCK II, sympatho-vagal imbalance (Haack et al., 2013), lipotoxicity, cell death, and tissue damage, as well as mitochondrial uncoupling and reduced cardiac efficiency. TG= triglycerides; GLUTs= glucose transporters; PDK4=pyruvate dehydrogenase kinase 4; MCD=malonyl-coenzyme A decarboxylase; MCoA= malonyl-coenzyme A; ACC= acetyl coenzyme A carboxylase; CPT1= carnitine palmitoyl-transferase 1; PDH= pyruvate dehydrogenase; CE= cardiac efficiency; PKC=protein kinase C; and AGE= glycation end products (Adapted from Ojji, 2011)

induced vascular endothelial replicative senescence (Wan et al., 2014; Wilkins and Molkentin, 2004; Brownlee, 2001; Brownlee, 2005: Banting Lecture; Buse, 2006; Fantus et al., 2006). GAPDH and cytochrome c oxidase are highly deregulated in the presence of oxidative stress and leads to decreased ATP levels.

Low cytosolic ATP concentrations impair relaxation of cardiomyocytes

Decreased ATP levels leads to switching off of its allosteric inhibition of cytochrome c release with resultant upregulation of ROS, cytochrome c release and apoptosis (Ramzan et al., 2013) who have noted that GAPDH may be the missing link between glycolysis and mitochondrial oxidative phosphorylation. The lower

phosphocreatine content and the switch in substrate preference from glucose to fatty acids may additionally lead to lower levels of ATP in the sarcomeres that cannot be overcome by increased mitochondrial ATP production. Lower cytosolic ATP concentrations are associated with impaired calcium sequestration by the sarcoplasmic reticulum and impaired relaxation of cardiomyocytes (Ojji, 2011).

There is increased interstitial fibrosis in DCM with resultant diastolic (restrictive) and systolic dysfunction. The diabetic heart relies almost solely on free fatty acids (FFA) as metabolic substrate and FFA-induced overproduction of superoxide may lead to uncoupling of endothelial nitric oxide synthase (eNOS) by peroxynitrite (Du et al., 2006; Anderson et al., 2007; Opie and Knuuti, 2009; Bayeva et al., 2013) and oxygen wastage.

Decreased compensatory mechanisms in diabetics following myocardial infarction

Following myocardial infarction, the surviving myocardium of non-diabetics becomes hyperkinetic to compensate for non-viable infarcted myocardium in an attempt to maintain cardiac output. However, in diabetic patients, these areas of myocardium cannot achieve this compensatory enhancement in function due to a complex set of intra- and extra-myocardial factors superimposed on an already reduced coronary artery flow reserve (Hayat et al., 2004). There is impaired SERCA 2_A function (Rebsia et al., 2010), increased renin-angiotensin system (RAS) activation which impairs insulin signalling (Muscogiuri et al., 2008), impaired angiogenesis, sympathetic dysfunction and increased arrhythmogenicity in diabetic patients. Chronic adrenergic stimulation in HF increases monoamine oxidases (MAO) which increases ROS (Kaludercic et al., 2011) and uncouples eNOS to increase mitochondrial dysfunction (Kowaltowski et al., 2009; Zou et al., 2002), compromise soluble guanylyl cyclase (Munzel et al., 2005) and upregulate vascular oxidative stress (Davel et al., 2014).

The dysregulated Ca²⁺ homeostasis in CHF may account for the increased arrhythmogenicity which may be made worse by inotropes such as the cardiac glycosides and phosphodiesterase inhibitors. Calcineurin, GSK-3 beta, JNK, p38 MAPK activate nuclear factor of activated T-cells (NFAT) to induce cardiac hypertrophy (Wilkins and Molkentin, 2004). The calcium/calmodulin-dependent phosphatase, calcineurin, which upregulates extracellular matrix proteins via transforming growth factor-beta has been found a sufficient and necessary (Wilkins and Molkentin, 2004) mediator of adult cardiac hypertrophy. GSK-3 beta inhibitors raise heat-shock proteins (HSPs) levels which are low in diabetes and its complications (Hooper, 2007).

The role of mitochondrial dysfunction

There is significant involvement of reactive oxygen species (ROS), endothelial vascular and mitochondrial dysfunction in the mechanisms of pathogenesis of diabetic cardiomyopathy (Duncan, 2011; Joshi et al., 2014). Diabetic cardiomyopathy is the leading cause of heart failure (HF) in diabetic patients and diabetes mellitus is now known to impose stress on the interfibrillar mitochondrial subpopulations (Dabkowski et al., 2009). Mitochondrial dysfunction leads to mitochondria-to-nucleus stress signalling and the retrograde response (Biswas et al., 2005) with its resultant altered expression of genes (Figure 1). It contributes significantly to the increased production of ROS which explains the metabolic dysregulation in diabetes and acceleration of telomere shortening (Passos et al., 2007; Biswas et al., 2005). Depletion of mitochondrial DNA (mtDNA) initiates

the mitochondrial stress signalling which operates through altered Ca²⁺ homeostasis, activating calcineurin and Ca²⁺ responsive factors including PKC and NFAT. Genes for glucose metabolism, oncogenesis, apoptosis, calcium release and storage are also activated in this major adaptive change in global gene expression. Telomere dysfunction activates p53 which in turn binds and represses PGC-I alpha and PGC-I beta promoters (Sahin et al., 2011; Xiong et al., 2013). Overexpression of the catalytic subunit of human telomeres (TERT) counteracts retrograde signalling induced by mitochondrial dysfunction (Biswas et al., 2005) and may reverse the decrease in the anti-oxidative enzymes, catalase and SOD (Wei et al., 2001). Telomerase is credited with the protection of mitochondrial function under oxidative stress (Ahmed et al., 2008).

The place of pharmacotherapy in CHF

CHF is currently treated with a combination of angiotensin converting enzyme inhibitors (ACEIs), angiotensin receptor blockers (ARBs), β-adrenergic receptor blockers, diuretics and digoxin. However, drug therapy is relatively palliative with cardiac transplantation remaining the only long-term curative treatment (Wilkins and Molkentin, 2004).

B-blockers have been shown convincingly to improve survival and prevent arrhythmia-induced sudden cardiac death after myocardial infarction, in non-ischaemic dilated cardiomyopathy and heart failure (Vora and Kulkarni, 2014). B-blockers but not ACEIs and/or ARBs provided additional benefit in African-Americans with HF on isosorbide dinitrate/hydralazine (Ghali et al., 2007). In randomised controlled trials (Carvedilol Prospective Cumulative Survival Study and US Carvedilol Heart Failure Study Group), carvedilol added to standard therapy with ACEIs and diuretics reduced mortality by approximately one-third and risk of hospitalisations by 65% associated with a heart rate reduction (Pacher et al., 2001; 1996; Silke, 2006). In the Carvedilol or Metoprolol European Trial, carvedilol reduced all-cause mortality by 5.7% compared to metoprolol after a 5-year follow-up (Poole-Wilson et al., 2003) and is also associated with reduction in the prevalence of new-onset diabetes by 22% compared with metoprolol (Torp-Pedersen et al., 2005; 2007).

Beneficial actions of beta-blockers in heart failure

- i) Reduce sympathetic tone
- ii) Increase vagal tone
- iii) Reduce renin release
- iv) Reduce endothelin production and release
- v) Increase nor-epinephrine re-uptake
- vi) Reduce inflammatory cytokines

- vii) Anti-oxidant effect
- viii) Antagonize antibodies against β_1 -receptors
- ix) Upregulate beta-adrenergic receptor
- x) Normalise high phosphorus energetic imbalance
- xi) Improve force-frequency relationships, increase left ventricular ejection fraction, reduce end- systolic volume and improve ventricular filling time
- xii) Improve myocardial work/oxygen consumption ratio
- xiii) Reduce sub-endocardial ischaemia
- xiv) Increase heart rate variability
- xv) Reduce Q-T dispersion and arrhythmias
- xvi) Reverse chronotropic incompetence by reversing deterioration in heart rate variability
- xvii) Carvedilol and nebivolol increase eNOS and insulin sensitivity
- xviii) Carvedilol (El-Kharashi and Abd-El Samad, 2011) reduce post-stroke seizures

Classification of beta-blockers

1st group: non-selective without ancillary properties like propranolol and timolol. Propranolol has the greatest inverse agonism of the β -blockers and is associated with significant negative chronotropic and inotropic effects (Vanderhoff and Ruppel, 1998)

2nd group: selective without ancillary properties. Examples include metoprolol, bisoprolol and atenolol

3rd group: non-selective, vasodilating. Examples are labetalol, nebivolol, carvedilol and bucindolol. Carvedilol and labetalol cause vasodilation through α_1 -receptor blockade (Pedersen and Cockcroft, 2007) which may lead to endothelium-dependent NO-mediated vasodilation (Kamper et al., 2005). Atenolol is not vasodilating and, therefore, does not reduce stroke and cardiovascular mortality. Prognosis for HF patients has remained poor despite reduced mortality resulting from the addition of ACEIs (Vanderhoff and Ruppel, 1998) probably due to the fact ACEIs have no anti-arrhythmogenic effect (Gilat et al., 1998) and may not inhibit angiotensin II produced through chymase-dependent mechanisms (Park et al., 2013; Harrison-Bernard et al., 2013). There is a switch from renal vascular ACE-dependent to chymase-dependent Ang II production and increased endothelin conversion in diabetic kidney.

Carvedilol, nebivolol, bucindolol and metoprolol are devoid of intrinsic sympathomimetic activity in human myocardium

As it were, the beta-adrenergic receptor blockers display considerable haemodynamic and pharmacodynamics heterogeneity. B-blockers with intrinsic sympathomimetic effects (ISA) like xamoterol are contraindicated in HF because of their detrimental increase in heart rate

(Brixius et al., 2001). Carvedilol and nebivolol, apart from lacking ISA, do not display inverse agonism which metoprolol possesses to cause receptor upregulation. Inverse agonism is more pronounced at β_2 - receptors than at β_1 -receptors (Taira et al., 2008).

Carvedilol has advantage in diabetic cardiomyopathy compared to other β -blockers

Carvedilol improves left ventricular ejection fraction which is reduced in DCM with systolic heart failure and reduces mortality (Bristow et al., 1996). There was no overall reduction in mortality with bisoprolol in the Cardiac Insufficiency Bisoprolol Study (CIBIS) or with metoprolol in the Metoprolol in Dilated Cardiomyopathy Trial (MDC). Bucindolol (Brixius et al., 2001) improves symptoms but not outcome in heart failure patients.

Carvedilol in CHF is more advantageous than the other beta-blockers in improving glucose and lipid metabolism, in reducing lipid peroxidation (Ferrua et al., 2005; Bhatt et al., 2007; Jacob and Hennksen, www.medscape.com). Carvedilol in patients with CHF results in significant reduction in free fatty acid use and relative increase in glucose utilisation (Wallhaus et al., 2001; Kessler and Friedman, 1998) thus reducing free radical generation and oxygen wastage. Carvedilol has the most evidence for reducing mortality and morbidity in HF and post-myocardial infarction (DiNicolantonio et al., 2015; Yang et al., 2003). Micro-albuminuria, a surrogate marker of endothelial dysfunction, is less likely with carvedilol (Ritz, 2005) than with metoprolol. While metoprolol and atenolol decrease insulin sensitivity, carvedilol increases insulin sensitivity and HDL cholesterol while decreasing plasma triglycerides (DiNicolantonio et al., 2015; Kveiborg et al., 2010; Giugliano et al., 1997; Jacob et al., 1996). Metoprolol, though more effective than atenolol in HF and reduces risk of re-infarction, may increase risk of cardiogenic shock and mortality in DCM. Bisoprolol reduces mortality more than placebo but increases risk of stroke. Carvedilol is comparable to captopril in reducing serum lipids (Hauf-Zachariou et al., 1993) but captopril may increase fatal and non-fatal strokes. Amlodipine may also reduce risk of diabetes mellitus but calcium channel blockers do not improve outcome in diabetic heart failure (PRAISE 2 Study; Packer et al., 2013).

The anti-oxidant carvedilol is a biased agonist at β_1 -adrenoceptors

Carvedilol, like nebivolol, are not classical beta-blockers (Erickson et al., 2013). Carvedilol is a biased agonist at β_1 - and β_2 -adrenoceptors (Violin and Lefkowitz, 2007; Wisler et al., 2007) that is independent of G-protein and involves G-protein- coupled receptor kinase 5 and

6(GRK)/ β -arrestin signalling with downstream activation of the epidermal growth factor receptor (EGFR) and extra-cellular signal-regulated kinase (ERK) to enhance Akt-mediated cardioprotection, anti-apoptosis and eNOS generation. β_1 -arrestin transactivation of EGFR counteracts the effects of catecholamine toxicity, a process partly mediated via inhibition of central (GTPase) Rho_A and its associated coiled-coil containing protein kinase (ROCK II) signalling. Attenuation of ROS-mediated upregulation of the Rho/ROCK pathway (Sun et al., 2008; Ying et al., 2009) leads to decrease of central sympathetic activation and baroreceptor imbalance while attenuating eNOS mRNA destabilisation (Haack et al., 2013; Noma et al., 2007). Increased superoxide generation from FFA- and shear stress mediated uncoupling of eNOS, hyperglycaemic stress, endothelin-1 (ET-1) activation and AT I_A -R upregulation may mediate an increase in sympathetic outflow by central neurons in congestive heart failure (Zucker, 2006; Campese et al., 2004; Hsieh et al., 2014). Inhibition of ROS generation by carvedilol also blocks transforming growth factor-beta (TGF- β)-mediated calcineurin phosphatase activity and decrease extracellular matrix (ECM) accumulation (Gooch et al., 2004) and cardiac hypertrophy (Wilkins and Molckentin, 2004). Biased ligands block GPCR-dependent harmful signalling but increase β -arrestin dependent signalling to offer cardioprotection (Patel et al., 2008; Kim et al., 2008; Tilley, 2011) and regulate microRNA processing (Kim et al., 2014; Zhu et al., 2013).

Carvedilol possesses enhanced survival advantages

Carvedilol has dose-related beneficial effects in survival in heart failure (Yang et al., 2003): a) through its anti-oxidant mechanisms, it may couple eNOS to induce vaso-relaxation, b) it displays anti-inflammatory effect through upregulating interleukin-10 and downregulating interleukin-18, an independent risk marker for cardiovascular morbidity (Watanabe et al., 2011), c) it has anti-proliferative effect and decreases neo-intima formation (Feuerstein et al., 1996), d) it displays significant anti-arrhythmic effects via inhibition of a number of cationic channels in the cardiomyocyte including the HERG-associated potassium channel, the L-type calcium channel and the rapid depolarising sodium channel (Nacarelli et al., 2005; Gilbert et al., 1996). Carvedilol is the only beta-blocker that reduces the open duration of the cardiac ryanodine receptor by suppressing store-overload induced calcium release (Zhou et al., 2011) in order to suppress arrhythmogenesis. e) it possesses α_1 -adrenoceptor blocking effect to enhance vaso-relaxation (Pedersen and Cockcroft, 2007, f) it enhances PI3K- Akt- PGC-1 α signalling which is anti-apoptotic and gerosuppressant (Hsiung et al., 2005; Povsic et al., 2003; Hayat et al., 2004; Gomez-Arroyo et

al., 2011; Xiong et al., 2013). This action of carvedilol may be mediated via increasing the concentration of hydrogen sulphide (H_2S) in the heart (Wilinski et al., 2011; King et al., 2014; Lefer, 2007). Vasodilating effects of nitric oxide and H_2S are mutually dependent and H_2S deficiency limits Akt activation, g) Carvedilol is a biased agonist at β_1 -adrenoceptors which acts downstream of β_1 -arrestin to transactivate EGFR and enhance EGFR - ERK signalling. It thus counteracts the effects of catecholamine by inhibiting apoptosis, enhancing cardiac cytoskeletal re-organisation and Akt-mediated cardioprotection (Tilley, 2011; Luttrell et al., 2015); h) in tandem with the above, carvedilol reverses cardiac hypertrophy and haemodynamic deficiency by normalising cardiac calcineurin and calcium/calmodulin dependent protein kinase II (CaMKII) (Li et al., 2014; MacDonnel et al., 2009). CaMKII overexpression may contribute to arrhythmogenesis (Sag et al., 2009). Carvedilol thus has survival advantages over other beta-adrenoceptor antagonists (Wisler et al., 2007).

By comparison, metoprolol may only prevent left ventricular dilatation but not hypertrophy after acute myocardial infarction (AMI) (Yang et al., 2003). Furthermore, carvedilol, not metoprolol, reduces the calcium-dependent augmentation of mitochondrial oxygen consumption (mvO_2) and ROS production upon complex I injury (Kametani et al., 2006). It also prevents mitochondrial permeability transition (MPT) (Carreira et al., 2006), attenuates doxorubicin-induced cardiomyopathy (Santos et al., 2002; Pereira et al., 2015) and decreases mitochondria-to-nucleus stress signaling. Not the least, carvedilol decreases autoantibodies against the beta (1), beta (2) and alpha (1) receptors (Chen et al., 2005), reduces the severity of atherosclerosis (Shimada et al., 2012) and may be protective against diabetic nephropathy (Abdel-Raheem et al., 2015). Bell (2004) observed that carvedilol may be the ideal beta-blocker for patients with diabetes mellitus.

Administration and pharmacokinetics of carvedilol

Carvedilol is rapidly and extensively absorbed and needs to be taken with food to lessen orthostatic hypotension. Both R (+) and S (-) enantiomers are extensively metabolised by ring oxidation and glucuronidation during first-pass in the liver by the P450 enzymes CYP2D6 and CYP2C9. The metabolites are excreted primarily via the bile into the faeces. Carvedilol is subject to the effects of genetic polymorphism with poor metabolisers of debrisoquin exhibiting higher plasma concentrations of R (+)- carvedilol compared to extensive metabolisers. 3 active metabolites have β -receptor blocking activity. Less than 2% of carvedilol is excreted unchanged by the kidneys. The absolute bioavailability is 25-30%. The half-life of carvedilol is 7-10 hours (Neugebauer and Neubert,

1991). The volume of distribution is 115 L, clearance is 500-700 ml/min and it is more than 98% bound to albumin.

It is safer to start treatment with low doses of carvedilol (3.125 mg twice a day) and then increase to 6.25 mg twice a day. Based on tolerability, this is increased to 12.5 mg twice a day after a week. This can later be increased to the target dose of 25 mg twice a day after 5 days (Nikolic et al., 2013). Total daily dose should not exceed 50 mg (www.drug.com).

Drug interactions: Since carvedilol is metabolised by the liver P 450 enzymes, its metabolism is influenced by inhibitors or inducers of the liver P 450 microsomal enzymes. Thus, cimetidine may increase the plasma concentration of carvedilol. Carvedilol may increase the plasma concentration of digoxin by about 15%.

Side-effects: Side-effects of carvedilol therapy include dizziness, fatigue, low blood pressure, diarrhea, bradycardia and weight gain.

In subjects with normal renal function, therapeutic doses decrease renal vascular resistance with no change in glomerular filtration rate.

Contraindications to carvedilol

Contraindications (Watanabe et al., 2011) to carvedilol include bronchial asthma, decompensated NYHA functional Class IV HF requiring intravenous inotropic therapy, severe liver impairment, second- or third-degree A/V block, sick sinus syndrome, cardiogenic shock, severe bradycardia and hypersensitivity to carvedilol.

Perspectives

Drugs that may prevent diabetic microvascular and macrovascular complications are based on the new paradigm of a unifying mechanism for the pathogenesis of diabetic complications (Brownlee, 2005; Banting Lecture 2004). These drugs would include: a) transketolase activators such as benfotiamine which decrease fructose-6-phosphate and glyceraldehyde-6-phosphate, two major glycolytic intermediates; b) PARP inhibitors which would block the four major pathways of hyperglycaemic damage, (PARP mediates structural alterations in DCM (Chiu et al., 2008) and c) catalytic anti-oxidants such as catalase- or peroxidase-mimetics (for example, metalloporphyrin) that would upregulate eNOS and prostacyclin synthase attenuated by hyperglycaemia, FFA and shear stress-induced increase in ROS production (Day, 2009; Hsieh et al., 2014). Nitric oxide exerts a tonic inhibitory control of sympathetic nervous system activity (Campese et al., 2004).

Dipeptidyl peptidase-4 (DPP-4) inhibitors and glucagon-like peptide-I(GLP-I) agonists may be combined for cardioprotection (Hausenloy et al., 2013). The DPP-4

inhibitor sitagliptin is a GLP-I enhancer and promotes cardioprotection via GLP-I in type 2 diabetic hearts primarily by limiting hyperglycaemia and hyperlipidaemia (Picatoste et al., 2013). GLP-I and its insulinotropic-inactive metabolite, GLP-I (9-36), may possess cell-autonomous cardioprotective action. GLP-receptor signalling may be linked to PPAR- δ activation. Metformin may also exhibit anti-apoptotic/anti-necrotic and anti-fibrotic direct effects in cardiac cells (Picatoste et al., 2013). Trimetazidine may be used to inhibit FFA oxidation (Opie and Knuuti, 2009) and decrease uncoupling of eNOS, while ranolazine which inhibits the late sodium inward channel is under investigation. Similarly, activators of protein kinase C epsilon may have a role in preventing DCM as they may inhibit the negative chronotropic properties of chronic hyperglycaemia (Malhotra et al., 2005).

Similarly, ghrelin which reverses sympatho-vagal imbalance in HF, protects from HF-induced myocardial infarction, improves exercise capacity, ameliorates diabetic cachexia and improves ventricular and endothelial function is being investigated for cardioprotection (Khatid et al., 2014; Qi et al., 2010).

Differential diagnosis of clinical diabetic cardiomyopathy with heart failure

Advanced glycation end products in diabetes mellitus may give rise to both dilated and restrictive phenotypes of clinical diabetic cardiomyopathy (Seferovic et al., 2015). Patients with unexplained dilated cardiomyopathy may be 75% more likely to have diabetes than age-matched controls (Poornima et al., 2006). The differentials of a dilated phenotype with heart failure and reduced ejection fraction are listed below. The diagnosis of diabetic cardiomyopathy relies on clinical data correlated with a long history of diabetes mellitus and, if possible, pathological and echocardiographic findings (Liu et al., 2007).

Differential diagnosis of dilated cardiomyopathy (Figure 2)

- Restrictive cardiomyopathy and heart failure with preserved ejection fraction (diastolic dysfunction). In this, there is coronary microvascular endothelial dysfunction and restrictive filling in diastole. Causes include amyloidosis and endomyocardial fibrosis and may be more prevalent in obese type 2 diabetics (Seferovic and Paulus, 2015; Ojji, 2011). Ejection fraction may be normal or preserved.
- Hypertrophic cardiomyopathy where ejection fraction may be more than 75%.
- Arrhythmogenic right ventricular cardiomyopathy/dysplasia

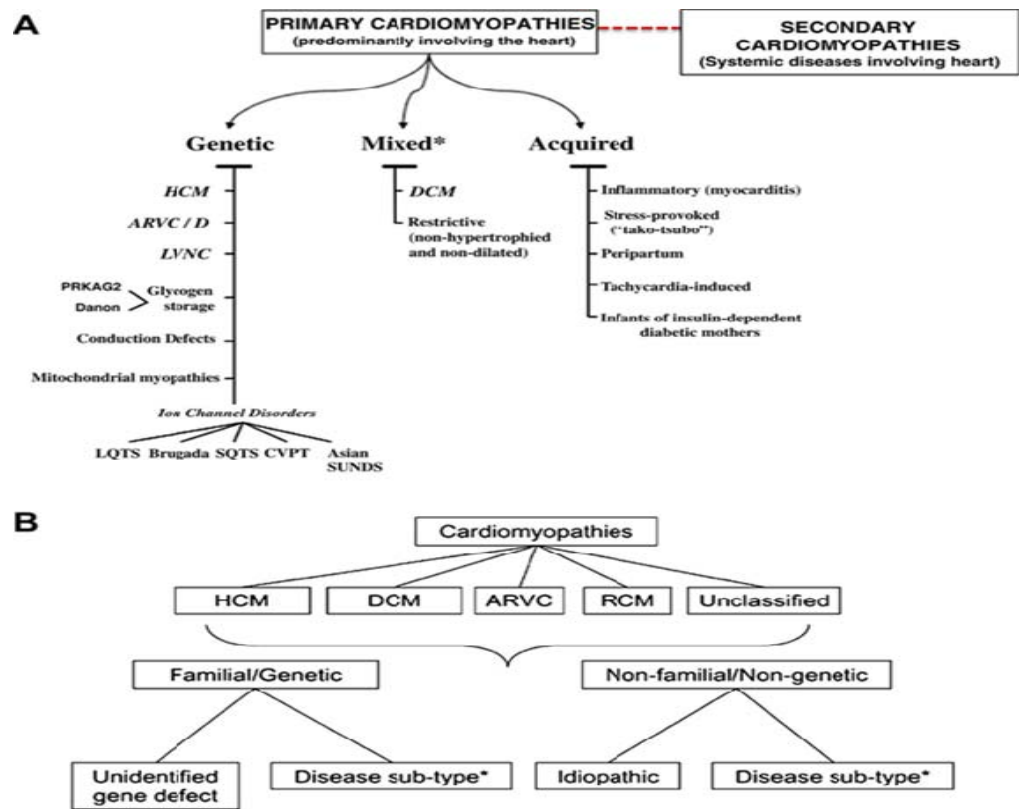


Figure 2: Classification of cardiomyopathies.

Current Classifications Of Cardiomyopathies: The 2006 American Heart Association classification proposes genetics-based classification (A). On the other hand, the 2008 European Society of Cardiology classification suggests first the morphofunctional phenotype and then the addition of inheritance information (B). ARVC/D = arrhythmogenic right ventricular cardiomyopathy/dysplasia; CVPT = catecholaminergic polymorphic ventricular tachycardia; DCM = dilated cardiomyopathy; HCM = hypertrophic cardiomyopathy; LVNC = left ventricular noncompaction; LQTS = long QT syndrome; RCM = restrictive cardiomyopathy; SQTS = short QT syndrome; SUNDS = sudden unexplained nocturnal death syndrome.

Source: The Morpho-functional, Organ-System involvement, Genetic, Etiological annotation, Stage (MOGE(S)) Classification for a Phenotype–Genotype Nomenclature of Cardiomyopathy: Endorsed by the World Heart Federation (Arbustini et al., 2013).

- d) Cardiac tamponade
- e) Myocarditis
- f) Acute pericarditis
- g) Hyperthyroidism
- h) Heavy metal toxicity
- i) Thiamine deficiency
- j) Amphetamine toxicity and cocaine-related cardiomyopathy

Classification of heart failure

American College of Cardiology/American Heart Association system:

Stage A: (high risk for developing heart failure): hypertension, coronary artery disease, diabetes mellitus, family history of cardiomyopathy

Stage B: (asymptomatic heart failure): previous myocardial infarction, left ventricular systolic dysfunction, asymptomatic valvular disease.

Stage C: (symptomatic heart failure): structural heart disease, dyspnea, fatigue, reduced exertion tolerance.

Stage D: (refractory end-stage heart failure): marked symptoms at rest despite maximal medical therapy, recurrent hospitalisations.

Present drugs for heart failure

- Angiotensin converting enzyme inhibitors (ACEIs)
- Angiotensin receptor blockers (ARBs)
- B-blockers
- Cardiac glycosides
- Diuretics
- Vasodilators

Anti-arrhythmics
Human B-type natriuretic peptide
Inotropic agents
Inodilators (for example, levosimendan which is under clinical trial)

CASE REPORT

A 62 year-old male patient was seen January, 2014 at Oseghale Oriaifo Medical Centre, Idumebo-Ekpoma with clinical diagnosis of diabetes-induced CHF. Patient has had diabetes mellitus for more than 11 years. He presented with moderate tachypnea, dyspnea on exertion, limitation of physical activity and cough. There was finger clubbing, severe pedal oedema and hepatomegaly. There was pulmonary oedema with wheezes. Heart examination revealed right ventricular heave, apical presystolic pulse and systolic mitral murmur. He had no fever but was very pale with PCV of 12%. The total WBC count revealed no eosinophilia and this ruled out loeffler's syndrome. Otherwise, the serum electrolytes/urea and total WBC revealed no significant abnormality. Pulse was 105/min, regular but of poor volume. Fasting blood sugar was 326 mg/dl. Patient was also hypertensive (BP of 170/115 in the supine position). Chest X-ray showed cardiomegaly which was confirmed by ultra-sound examination. Chest X-ray showed marked unfolding of the aorta, increased cardio-thoracic ratio with prominent vascular markings of the upper lung fields. There was pleural effusion on the right side. In fact, the heart appeared boot-shaped as found in endomyocardial fibrosis (EMF) which affects children and young adults in the tropics. Ultra-sound showed hepatomegaly with tortuosity of hepatic vessels.

Echocardiography in M-mode showed diastolic left ventricular dimension > 65 mm. There was septal wall thickness of 12 mm. Electrocardiography showed non-specific ST elevation, a Q wave and left ventricular hypertrophy with chamber enlargement. Echocardiography showed patient's ejection fraction to be reduced (39±2%) consistent with heart failure and cardiomegaly. Normal ejection fraction is 55-70%. There were premature ventricular complexes. He confirmed he has not been compliant with his medications (which included metoprolol, furosemide and digoxin) due to finance. Diagnosis of DCM-induced HF (American Heart Association Stage C) was made.

The first priority was to resuscitate and transfuse with a pint of packed cells under the cover of furosemide 100 mg intravenously and digoxin tablet orally, in order to fore-stall acute decompensation, a known sequel of drug non-compliance/lack of efficacy. He was also administered aminophylline slowly intravenously during the transfusion procedure. The pint of packed cells ran very slowly for over 5 hours under direct supervision by author. With absolute precautions, he tolerated the

transfusion with lessening of the orthopnea and regained strength.

He was started on metformin (Glucophage), after confirming that the plasma creatinine was 1.40 mg/dl, at a dose of 1,500 mg/day. For the DCM-induced HF, he continued with intravenous furosemide (60 mg/day) for a week before changing to the tablets at 40 mg daily per oral. Also, low-dose digoxin was started orally and discontinued after 15 days. Losartan was also commenced. Adjunctive carvedilol was commenced at a dose of 3.125 mg twice daily which was increased to 6.25 mg twice daily after 5 days ("starting low and going slow"). This was increased to 12.5 mg twice a day after for two weeks before changing to the maximal dose of 25 mg twice daily.

After a week on metformin and dietary restriction, his blood sugar dropped to 150 mg/dl and BP reduced to 150/105 mm Hg. With the combination treatment for HF, there was improvement in exercise tolerance after a week and his pedal oedema and hepatomegaly greatly reduced. His easy fatigability on moderate exertion disappeared after three weeks and repeat scans showed gradual decrease in the cardiomegaly and liver enlargement. With echocardiography, the ejection increased to 45±4% after three months. His score on the Geriatric Depression Scale (GDS), administered as a structured face-to-face interview, which was 14.20±5 at beginning of treatment reflecting mild depression (Wikipedia.org) fell significantly to 8.50±4 after 3 months (normal: 0-9). He has continued to maintain improvement and was counselled on need for calorie restriction with the *Oriaifo diet* and moderate exercise training.

DISCUSSION

Diabetes affects 10-30% of patients with heart failure (Solang et al., 1999) and, especially in women, the presence of diabetes increases the risk of death by 50% in patients with heart failure (Gustafsson et al., 2004). Simultaneous control of glycaemia, hypertension and dyslipidaemia are reported (Miki et al., 2013) to significantly reduce cardiovascular events and mortality in type 2 diabetes mellitus patients. Case-report illustrates successful management of DCM-induced HF with adjunctive carvedilol, furosemide, losartan and metformin in an elderly male Nigerian patient. Clinical outcomes in diabetic patients with heart failure are better in patients treated with metformin (Eurich et al., 2005; Aguilar et al., 2011; Miki et al., 2013). Metformin is known to be useful in management of type 2 diabetes mellitus and may exhibit enhanced cardioprotective effects when combined with DPP-4 inhibitors (Hamdani et al., 2014) that possess GLP-I enhancing effects such as sitagliptin (Picatoste et al., 2013) which may partially upregulate the cGMP-PKG pathway to decrease left ventricular passive stiffness. We have previously reported that the combination of

metformin and calorie restriction was more effective in the prevention of adverse cardiovascular events and mortality amongst patients with type 2 diabetes mellitus than metformin alone, sulphonylureas and insulin (Oriaifo et al., 2015). While rosiglitazone accentuated lipid accumulation and decreased eNOS in the spontaneously hypertensive, insulin resistant (SHHR) rat, the biguanide metformin upregulated eNOS and hydrogen sulphide while attenuating left ventricular remodelling, wall stress, perivascular fibrosis and cardiac lipid accumulation (Cittadini et al., 2010; Wilsinski et al., 2013). Age- and hypertension-related decline in nitric oxide and hydrogen sulphide bioavailability may be corrected by calorie restriction and exercise training (Smith et al., 2006; Predmore et al., 2010; Gu et al., 2012). Generation of hydrogen sulphide (H₂S) by exercise training, calorie restriction, carvedilol and metformin may in concert enhance mitochondrial function and rescue eNOS from peroxynitrite-induced uncoupling (Gu et al., 2012; Predmore et al., 2010; Al-Magableh et al., 2013; Guo et al., 2012).

The nitric oxide- and hydrogen sulphide-dependent vasodilator and β_1 -adrenoceptor biased agonist, carvedilol, exhibits beneficial actions in hypertension, heart failure and acute myocardial infarction (Verma et al., 2004; Leonetti and Egan, 2012; DiNicolantonio et al., 2015; Kveiborg et al., 2007) and may be combined with losartan for enhanced effects (Yang et al., 2003). Low dose carvedilol may be effective in reducing areas of myocardial fibrosis and stiffness (Watanabe et al., 2000; Masutani et al., 2008) important in contributing to a restrictive left ventricular filling pattern and mitral regurgitation which is frequent in dilated cardiomyopathy (Palazzuoli et al., 2004; Capomolla et al., 2000). Restricted left ventricular filling pattern assessed by Doppler echocardiography is a powerful indicator of increased mortality risk in CHF and may signal need for additional vasodilator therapy (Atherton et al., 1998) or heart transplant (Pinamonti et al., 1993). Increased hydrogen sulphide consumption by hyperglycaemic cells causes hydrogen sulphide deficiency implicated in dampening Akt-mediated cardioprotection (Szabo, 2012; King et al., 2014).

Compared to metoprolol which may increase coronary sinus norepinephrine levels and β -receptor density, carvedilol selectively lowered coronary sinus norepinephrine levels and do not change cardiac β -receptor density (Gilbert et al., 1996). This may be an additional advantage for carvedilol since norepinephrine stimulates apoptosis in adult ventricular myocytes by activation of the β -adrenergic pathway (Communal et al., 1998).

Angiotensin II is correlated with hyperglycaemia-induced oxidative stress and cardiac myocyte apoptosis δ fibrosis. Hyperglycaemia activates the intra-cellular renin-angiotensin system in cardiac fibroblasts (Singh et al., 2008_A) and increases intracellular levels of angiotensin II

(Ang II) in cardiac myocytes and kidneys from diabetic hearts. This intracellular synthesis of Ang II is not blocked by ACE inhibitors (Singh et al., 2008_B; Park et al., 2013). Furthermore, the sole use of ACE I or ARB may be associated with Ang II and aldosterone escape and increase in plasma renin activity (Badheka et al., 2012). Importantly, carvedilol markedly suppresses the increase in active renin observed with time despite angiotensin converting enzyme inhibition and also decreases angiotensin converting enzyme activity (Solal et al., 2004).

Carvedilol and aerobic exercise training may represent better prognostic power in life-long treatment of diabetic HF. Exercise training stands to enhance the effect of carvedilol in improving baroreflex function and reducing sympathetic nerve activity by decreasing ROS-mediated activation of the Rho/ROCK pathway (Campese et al., 2004, Sun et al., 2008; Ying et al., 2009) and attenuating angiotensin II and angiotensin receptors in the CNS (Mousa et al., 2008). Both aerobic exercise training and carvedilol reduce mortality, increase exercise tolerance (Vanzelli et al., 2013) and mitochondrial biogenesis (Steiner et al., 1985; Pereira et al., 2011). Both re-establish left ventricular contractility and lead to a ventricular reverse re-modeling. Both prevent ventricular lipid peroxidation and alter expression levels of proteins involved in Ca²⁺ handling. Combined treatment is noted to significantly increase SERCA₂ expression. Exercise training is the most potent stimulus to increase skeletal muscle GLUT 4 expression (Richter and Hargreaves, 2013) even in conditions of insulin resistance (Stanford and Goodyear, 2014; Hawley and Lessard, 2008) and may synergise with carvedilol that also increases insulin sensitivity in HF (Torp-Pedersen et al., 2005; Ferrua et al., 2005; Kveiborg et al., 2007; 2010). Exercise mediates muscle GLUT 4-dependent glucose uptake independent of AMPK via Ca²⁺/calmodulin-dependent protein kinases, Akt substrate of 160 KDa (AS160), atypical protein kinase Cs and the Rho family of GTPase Rac₁ (Stanford and Goodyear, 2014).

Carvedilol may attenuate the age-related decline (Lowe et al., 2000) in GAPDH levels via its inhibition of PARP (Strosznajder and Dziewulska, 2005; Habon et al., 2001) and its induced decrease in TGFB-I/GAPDH ratio (Okumura et al., 2015). Carvedilol-induced decrease in ADP-ribosylation of GAPDH and resultant enhanced GAPDH levels stand to downregulate the pathways important in pathobiology of diabetic complications (Brownlee, 2005; Fantus et al., 2006): attenuation of the polyol pathway-mediated decrease in NADPH and glutathione levels, decrease in AGEs biosynthesis, attenuation of PKC activation and decrease of the hexosamine biosynthesis pathway.

Importantly, carvedilol's upregulation of mitochondrial biogenesis may upregulate neurotrophic factors and stands to impact positively on parameters of cardiovascular psychiatry and neurology, a protégé of

the heart-brain connection (Ritz et al., 2013; Manev, 2009; Oriaifo et al., 2015). This is important when we consider that other potential advantages of carvedilol include the suppression of seizures which may be more common in diabetic and stroke patients (Kirchner et al., 2006; Schwechter et al., 2003; El-kharashi and El-Samad, 2011; Goel and Goel, 2013). Carvedilol is more potent than amlodipine in preventing cytotoxicity in cortical neurons from stroke-prone states (Yamagata et al., 2004). Carvedilol's inhibition of acid sphingomyelinase (Reddy et al., 2014) leads to inhibition of ceramide production (Beckmann et al., 2014) and this may likely contribute to beneficial effects in insulin resistance (Smith et al., 2006; Hansen et al., 2014), status epilepticus (Mikati et al., 2003; Schauwecke, 2012), Alzheimer's disease, bipolar disorder and depression which may be co-morbid with DCM (Arrieta-Cruz et al., 2010; Schwarz et al., 2008; Singh et al., 2002). Score in the GDS became normal after 3 months in this patient. In fact, carvedilol may help prevent Alzheimer's disease (Wang et al., 2011) and depression (Chen et al., 2013) partly through hydrogen sulphide which upregulates nitric oxide production (Wilinski et al., 2011), an effect that may be enhanced by metformin which also increases brain H₂S (Wilinski et al., 2013). Carvedilol alone via its vasodilator and anti-oxidant mechanisms (Cotter and Cameron, 1995) or in combination with metformin may produce enhanced anti-hyperglycaemic effects which may reverse hyperglycaemia-induced schwann cell de-differentiation like aldose reductase inhibitors such as epalrestat and could be beneficial in diabetic neuropathy (Hao et al., 2015).

Diabetes mellitus causes bone marrow microangiopathy, hypoperfusion and depletion of haematopoietic cells (Oikawa et al., 2010) and this may explain the severe anaemia in this patient which necessitated blood transfusion. Carvedilol via its anti-oxidant mechanism also prevents red blood cell membrane damage due to free radicals (Habon et al., 2001) and could contribute to prevention of diabetes-induced anaemia.

CONCLUSION

The vasodilator, anti-oxidant and β -arrestin₁-biased β_1 -adrenergic receptor agonist, carvedilol seems to possess significant survival benefits in diabetes-induced dilated cardiomyopathy with heart failure and its effect may be enhanced by exercise training. Carvedilol, which may partly explain the link between cardiometabolic and neuropsychiatric disorders, deserves to be more frequently prescribed for patients with diabetic cardiomyopathy and heart failure.

ACKNOWLEDGEMENT

Assistance rendered by Donald and Ronald Oriaifo in text preparation while on holidays in US is hereby acknowledged.

REFERENCES

- Abdel-Raheem MH, Salim SU, Mosad E, Al-Rifaay A, Salama HS, Hassan-Ali H (2015). Anti-apoptotic and anti-oxidant effects of carvedilol and vitamin E protect against diabetic nephropathy and cardiomyopathy. *Horm. Metab. Res.* 47(2): 97-106.
- Aguilar D, Chan W, Bozkurt B, Ramasubbu K, Deswal A (2011). Metformin use and mortality in ambulatory patients with diabetes and heart failure. *Circ. Heart Fail.* 4(1): 53-58.
- Ahmed S, Passos JF, Birket MJ, Beckmann T, Brings S, Peters H (2008). Telomere does not counteract telomere shortening but protects mitochondrial function under oxidative stress. *J. Cell. Sci.* 121: 1046-1053.
- Al-Magableh MR, Kemp-Harper B, Ng HH, Miller A, Hart JL (2013). Hydrogen sulphide protects endothelial nitric oxide function under conditions of acute oxidative stress. *Arch. Expt. Path. Pharmacol.* 387(1) doi: 10.1007/s00210-013-0920-x.
- Anderson EJ, Lustig ME, Boyle KE, Woodlief TL, Kane DA, Lin C-T (2009). Mitochondrial H₂O₂ emission and cellular redox state link excess fat intake to insulin resistance in both rodents and humans. *JCI.* 15(3): 573-581.
- Arbustinin E, Narula N, William Dec G (Jnr), Srinath Reddy K, Greenberg B, Kushwaha S (2013). Classification of cardiomyopathy. *JACC.* 62(22): 2046-2072.
- Arrieta-Cruz I, Wang J, Paulides C, Pascinetti GM (2010). Carvedilol re-establishes LTP in a mouse model of Alzheimer's disease. *J. Alzheimer's Dis.* 21: 649-654.
- Atherton JJ, Moore TD, Thomson HL, Frenneaux MP (1998). Restrictive left ventricular filling patterns are predictive of diastolic ventricular interaction in CHF. *J. Am. Coll. Cardiol.* 31(2): 413-418.
- Badheka AO, Ali Kizilbash M, Bharadwaj A, Afonso L (2012). Combined use of direct renin inhibitors and carvedilol in HF with preserved ejection fraction. *Med. Hypothes.* 79(4): 448-451.
- Bayeva M, Sawicki KT, Ardehali H (2013). Taking diabetes to heart-deregulation of myocardial lipid metabolism in diabetic cardiomyopathy. *J. Am. Heart. Assoc.* doi: 10.1161/JAHA.11300433.
- Beckmann N, Sharma D, Gulbins E, Becker KA, Edelman B (2014). Inhibition of acid sphingomyelinase by tricyclic antidepressants and analogons. *Front. Physiol.* <http://dx.doi.org/10.3389/fphys.2014.00331>.
- Bell DSH (2004). Advantages of a third-generation beta-blocker in patients with diabetes mellitus. *Am. J. Cardiol.* 93(9): 49-52.
- Bhatt P, Makwana D, Santani D, Goval R (2007). Comparative effectiveness of carvedilol and propranolol on glycaemic control and insulin resistance associated with L-thyroxine-induced hyperthyroidism-an experimental study. *Can. J. Physiol. Pharmacol.* 88(5): 514-570.
- Biswas G, Guha M, Avadhani NG (2005). Mitochondria-to-nucleus stress signalling in mammalian cells: nature of nuclear gene targets, transcription regulation, and induced resistance to apoptosis. *Gene.* 354: 132-139.
- Boudina S, Abel ED (2007). Diabetic cardiomyopathy revisited. *Circ.* 115: 3213-3223.
- Boudina S, Abel ED (2010). Diabetic cardiomyopathy: causes and effects. *Rev. Endocrin. Metab. Disord.* 11(1): 31-39.
- Bristow MR (2000). B-adrenergic receptor blockade in chronic heart failure. *Circ.* 100: 558-568.
- Bristow MR, Gilbert EM, Abraham WT, Adams KF, Fowler MB, Hershberger RE (1996). Carvedilol produces dose-related

- improvement in left ventricular function and survival in subjects with chronic heart failure. MOCHA Investigators. *Circ.* 94(11): 2807-2816.
- Brixius X, Bundkircher A, Bolck B, Mehlhorn U, Schwinger RHG (2001). Nebivolol, bucindolol, metoprolol and carvedilol are devoid of ISA in human myocardium. *BJP.* 133(8): 1330-1338.
- Brownlee M (2001). Biochemistry and molecular cell biology of diabetic complications. *Nature.* 415: 813-820.
- Brownlee M (2005). The pathobiology of diabetic complications: a unifying mechanism. *Diabetes.* 54(6): 1615-1625.
- Buse MG (2006). Hexosamines, insulin resistance, and the complications of diabetes: current status. *Am. J. Physiol. Endocrinol. Metab.* 290(1): E1-E8.
- Campese VM, Ye S, Zhong H, Yanamadala V, Ye Z, Chiu J (2004). Reactive oxygen species stimulate central and peripheral sympathetic nervous system activity. *Am. J. Physiol. Heart Circ. Physiol.* 287(2): H695-703.
- Capomolla S, Febo O, Gnemmi M, Riccardi G, Opasich C, Caporotondi A (2000). Beta-blockade therapy in CHF: diastolic function and mitral regurgitation improvement by carvedilol. *Am. Heart J.* 139(4): 596-608.
- Carreira RS, Monteiro P, Gon Alves LM, Providencia LA (2006). Carvedilol; just another Beta-blocker or a powerful cardioprotector? *Cardiovasc. Haematol. Disord. Drug Targets.* 6(4): 257-266.
- Carvalho G, Pelletier P, Albacker T, Lachapelle K, Joanisse DR, Hatzakorjian R (2011). Cardioprotective effects of glucose and insulin administration while maintaining normoglycaemia (GIN therapy) in patients undergoing coronary artery bypass grafting. *J. Clin. Endocrinol. Metab.* 96(5): 1469-1477.
- Chen J, Hu DY, Zhang L, Liu XL, Wu YF, Li J (2005). The effect of carvedilol on cardiac function and autoantibodies against the cardiac receptor. *Zhonghua Xin Xue Guan Bing Za Zhi.* 33(6): 498-501
- Chen WL, Xie B, Zhang C, Xu KL, Niu YY, Yang XQ (2013). Antidepressant-like and anxiolytic-like effects of hydrogen sulphide in behaviour models of depression and anxiety. *Behav. Pharmacol.* 24(7): 500-507.
- Chiu J, Farhangkhoei H, Xu BY, Chen S, George B, Chakrabarti S (2008). PARP mediates structural alterations in diabetic cardiomyopathy. *J. Mol. Cell Cardiol.* 45(3): 385-393.
- Cittadini A, Napoli R, Monti MG, Rea D, Longobardi S, Netti PA (2012). Metformin prevents the development of CHF in the spontaneously hypertensive, insulin resistant rat. *Diabet.* 61(4): 944-953.
- Communal C, Singh K, Pimental DR, Colucci WS (1998). Norepinephrine stimulates apoptosis in adult rat ventricular myocytes by activation of the β -adrenergic pathway. *Circ.* 1329-1334.
- Cotter MA, Cameron NE (1995). Neuroprotective effect of carvedilol in diabetic rats: prevention of defective peripheral nerve conduction velocity. *Naunyn-Schmiedeberg's Arch. Pharmacol.* 351(6): 630-635.
- Dabkowski ER, Williamson CL, Bukowski VL, Chapman RS, Leonard SS, Peter CJ (2009). Diabetic cardiomyopathy-associated dysfunction in spatially distinct mitochondrial subpopulations. *Am. J. Physiol-Heart Circ. Physiol.* 296(6): H359-H369.
- Davel AP, Brum PC, Rossoni LV (2014). Isoproterenol induces vascular oxidative stress and endothelial dysfunction via a Gi alpha-coupled β_2 -adrenoceptor signalling pathway. *PLoS One.* doi: 10.1371/journal.pone.0091877.
- Davel V, Tyagi SC, Mishra PK Jnr (2013). Predictors and prevention of diabetic cardiomyopathy. *Diabet. Metab. Syndr. Obes.* 6: 151-160.
- Day BJ (2009). Catalase and glutathione peroxidase mimetics. *Biochem. Pharmacol.* 77(3): 285-296
- Del Noga-Avila M, Troyano-Suarez N, Roman-Garcia P, Cannata-Andia JB, Rodriguez-Puvol M, Rodriguez-Puvol D (2013). Amadori products promote cellular senescence activating IGF-I and downregulating the anti-oxidant enzyme catalase. *Intern. J. Bioch. Cell Biol.* 45(7): 1255-12564.
- Dhar SS, Johar K, Wong-Riley MTT (2013). Bigenomic transcriptional regulation of all thirteen cytochrome C oxidase subunit genes by specificity protein I. *Open Biol.* 3: 120176 doi: 10.1098/rsob.120176.
- DiNicolantonio JJ, Fares H, Niazi K, Chatterjee S, D'Ascenzo F, Cerrato E (2015). B-blockers in hypertension, heart failure and acute myocardial infarction: a review of the literature. *Open Heart.* 2(1) doi: 10.1136/openhrt-2014-000230.
- Du X, Edelstein D, Obici S, Higham NI, Zou M-H, Brownlee M (2006). Insulin resistance reduces arterial prostacyclin synthase and endothelial nitric oxide synthase activity by increasing endothelial fatty acid oxidation. *J. Clin. Invest.* 116(4): 1071-1080.
- Duncan JG (2011). Mitochondrial dysfunction in diabetic cardiomyopathy. *Biochim. Biophys. Acta.* 1813(7): 1351-1359.
- El-Kharashi OA, Abd El-Samad AA (2011). The potential pharmacologic and histologic benefits of carvedilol on the hippocampal post-stroke seizures in rats. *Lif. Sci. J.* 8(4): 951-960.
- Erickson CE, Gul R, Blessing CP, Nguyen J, Liu T, Pulakat L (2013). The beta-blocker, nebivolol, is a GRK/ β -arrestin biased agonist. *PLoS One.* 8(3): e71980 doi: 10.1371/journal.pone.00071980
- Eurich DT, Majumdar SR, McAlister FA, Tsuyuki RT, Johnson JA (2005). Improved clinical outcomes with metformin in patients with diabetes and HF. *Diabet. Car.* 28(10): 2345-2351.
- Fantus G, Goldberg HJ, Whiteside CI, Topic D (2006). The hexosamine biosynthesis pathway: contribution to the pathogenesis of diabetic nephropathy. *Contemporary Diabetes: The Diabetic Kidney.* Chapter 7: 117-133. doi:10.1007/978-1-59745-153-6_7 (Eds: Cortes P and Mogesten CE: Humana Press Inc., Totowa, NJ, USA).
- Ferrua S, Bobbio M, Catalano E, Grassi IG, Massobrio N, Pinach S (2005). Does carvedilol impair insulin sensitivity in heart failure patients without diabetes? *J. Cardiac. Fail.* 11(8): 590-594.
- Feuerstein GJ, Ruffolo RR (1996). Carvedilol, a novel vasodilating beta-blocker with the potential for cardiovascular organ protection. *Eur. Heart J.* 17(8): 24-29.
- Fullmer TM, Pei S, Zhu Y, Sloan C, Manzanares R, Henrie B (2013). Insulin suppresses ischaemic preconditioning-mediated cardioprotection through Akt-dependent mechanisms. *J. Mol. Cell. Cardiol.* doi: 10.1016/j.jmcc-2013-08-005
- Ghali JK, Tam SW, Ferdinand KC, Lindenfeld J, Sabolinski ML, Taylor AL (2007). Effects of AEs or beta-blockers in patients treated with the fixed-dose combination of isosorbide dinitrate/hydralazine in the African-American Heart Failure Trial. *Am. J. Cardiovasc. Drugs.* 7(5): 373-380.
- Gilat E, Girouard SD, Pastore JM, Laurita KR, Rosenbaum DJ (1998). Angiotensin converting enzyme inhibition produces electrophysiologic but not anti-arrhythmic effects in the intact heart. *J. Cardiovasc. Pharmacol.* 31(5): 734-740.
- Gilbert EM, Abraham WT, Olsen S, Hattler B, White M, Mealy YP (1996). Comparative haemodynamic, left functional and anti-adrenergic effects of chronic treatment with metoprolol versus carvedilol in the failing heart. *Circ.* 94: 2817-2825.
- Giugliano D, Acampora R, Marfella R, De Rosa N, Ziccardi P, Ragone R (1997). Metabolic and cardiovascular effects of carvedilol and atenolol in non-insulin-dependent diabetes mellitus and hypertension-a randomised controlled trial. *Ann. Intern. Med.* 126: 955-959.
- Goel R, Goel A (2013). Interaction between carvedilol and sodium valproate along with neuro-behavioural co-morbidities in various epilepsy models. *Drug Invent. Today.* 5(2): 87-91.
- Gomez-Arroyo J, Mizuno S, Farkas L, Kraskauskas D, Farkas D, Hussein A (2011). Adrenergic receptor blockade reverses cardiac metabolic remodelling and improves right ventricular function in experimental pulmonary hypertension. *Eur. Resp. J.* 38(55): 47-57.
- Gooch JL, Gorin Z, Zhang BX, Abboud HE (2004). Involvement of cagineurin in the transforming growth factor-beta-mediated regulation of extracellular matrix accumulation. *J. Biol. Chem.* 279(15): 15561-15570.
- Gu Q, Wang B, Zhang Z-F, Ma Y-P, Liu J-D, Wang X-Z (2012). Contribution of hydrogen sulphide and nitric oxide to exercise-induced attenuation of aortic remodelling and improvement of endothelial function in SHR. *Mol. Cell. Biochem.* 375(1) doi: 10.1007/s11010-012-1542-1
- Guo W, Kan J-T, Cheng C-Y, Chen J-F, Shen Y-Q, Xu J (2012).

- Hydrogen sulphide as an endogenous modulator in mitochondria and mitochondrial dysfunction. *Oxid. Med. Cell. Longev.* 2012: 878052 <http://dx.doi.org/10.1155/2012/878052>.
- Gustafsson I, Brendorp B, Seiback M, Burchardt H, Hildebrandt P, Kaber L, Torp-Pedersen C (2004). Influence of diabetes and diabetes-gender interactions on the risk of death in patients hospitalised with congestive heart failure. *J. Am. Coll. Cardiol.* 45(3): 771-777.
- Haack KKV, Gao L, Schiller AM, Curry PL, Pellegrini PR, Zucker IH (2013). Central Rho kinase inhibition restores baroreflex sensitivity and angiotensin II type I protein imbalance in conscious rabbits with chronic heart failure. *Hypertens.* 61(3): 723-729
- Habon T, Szabados E, Kesmarky G, Halmosi E, Past T, Sumegi B (2001). The effects of carvedilol on enhanced ADP-ribosylation and red blood cell membrane damage caused by free radicals. *Cardiovasc. Res.* 52(1): 153-160.
- Halter JB, Musi N, Home FM, Grandall JP, Goldberg A, Harkless L (2014). Diabetes and cardiovascular disease in older adults: current status and future directions. *Diabetes.* 63(8): 2578-2589.
- Hamdani N, Hervent AS, Vandekerckhove L, Matheeuissen V, Dmolder M, Baerts L (2014). Left ventricular diastolic dysfunction and myocardial stiffness in diabetic mice is attenuated by inhibition of DPP-4. *Cardiovasc. Res.* 104(3): 423-431.
- Hansen ME, Tippetts TS, Anderson MC, Holub ZE, Moulton ER, Swensen AC (2014). Insulin increases ceramide synthesis in skeletal muscle. *J. Diabet. Res.* 2014: 765-784.
- Hao W, Tashiro S, Hasegawa T, Sato Y, Kobayashi T, Tando T (2015). Hyperglycaemia promotes schwann cell de-differentiation and demyelination via sorbitol accumulation and Igf1 protein down-regulation. *J. Biol. Chem.* 290: 17106-17115.
- Harrison-Bernard LM, de Garavilla L, Bivona BJ (2013). Enhanced vascular chymase-dependent conversion of endothelin in the diabetic kidney. *Ochsner J.* 13(1): 49-55.
- Hauf-Zachariou U, Widmann L, Zulsdorf B, Hennig M, Lang PD (1993). A double-blind comparison of the effects of carvedilol and captopril on serum lipid concentrations in patients with mild to moderate hypertension and dyslipidaemia. *J. Clin. Pharmacol.* 45: 95-100.
- Hausenloy DJ, Whittington HJ, Wynne AM, Begum SS, Theodorou L, Riksen N (2013). Dipeptidyl peptidase-4 inhibitors and GLP-1 reduce myocardial infarct size in a glucose-dependent manner. *Cardiovasc. Diabetol.* 12: 154 doi: 10.1186/1475-2840-12-154.
- Hawley JA, Lessard SJ (2008). Exercise training-induced improvement in insulin resistance. *Acta. Physiol.* 192: 127-137.
- Hayat SA, Patel B, Khattar RS, Malik RA (2004). Diabetic cardiomyopathy: mechanisms, diagnosis and treatment. *Clin. Sci.* 107: 539-557.
- Hooper PL (2007). Insulin signalling, GSK-3, heat shock proteins and the natural history of type 2 diabetes mellitus: a hypothesis. *Metab. Syndr. Relat. Disor.* 5(3): 220-230.
- Hsieh H-Y, Liu C-A, Huang B, Tseng AHH, Wang DL (2014). Shear-induced endothelial mechanotransduction: the interplay between ROS and nitric oxide and the pathophysiological implications. *J. Biomed. Sci.* 21:13 doi: 10.1186/1423-0127-21-3
- Hsiung S-C, Tamir H, Franke TF, Liu K-P (2005). Roles of ERK and Akt signalling in co-ordinating nuclear transcription factor-kappaB-dependent cell survival after serotonin 1A receptor activation. *J. Neurochem.* 95: 1653-1666.
- Jacob S, Hennksen EJ (2004). Metabolic properties of vasodilating beta-blockers. Management considerations for hypertensive and diabetic patients and patients with the metabolic syndrome. *J. Clin. Hypertens. (Greenwich).* 6(12): 690-696.
- Jacob S, Rett K, Wicklmayr M, Agrawal B, Augustin HJ, Dietze GJ (1996). Differential effect of chronic treatment with two beta-blocking agents on insulin sensitivity: The carvedilol-metoprolol study. *J. Hypertens.* 14: 489-494.
- Johar K, Priya A, Dhar S, Liu Q, Wang-Riley MTT (2013). Neuron-specific specificity protein bigenomically regulates the transcription of all mitochondrial- and nucleus-encoded cytochrome C oxidase subunit genes in neurons. *Journal of Neurochemistry* 127(4): 490-508.
- Joshi M, Kotha SR, Malireddy S, Selvaraju V, Satoskar AR, Palasty A (2014). Conundrum of pathogenesis of diabetic cardiomyopathy: role of vascular endothelial dysfunction, ROS and mitochondria. *Mol. Cell Biochem.* 386(1-2): 233-249.
- Kaludercic N, Carpi A, Menabo R, Di Lisa F, Paolocci N (2011). Monoamine oxidases in the pathogenesis of heart failure and ischaemia/reperfusion injury. *Biochim. Biophys. Acta.* 1813(7): 1323-1332.
- Kametani R, Miur T, Harada N, Shibuya M, Wang R, Tan H (2006). Carvedilol inhibits mitochondrial oxygen consumption and superoxide production during calcium overload in isolated heart mitochondria. *Circ. J.* 70(3): 321-326.
- Kamper AM, de Craen AJM, Westendorp RGJ, Blauw GJ (2005). Endothelial-dependent nitric oxide-mediated vasodilation in humans is attenuated by peripheral α_1 -adrenoceptor activation. *Vasc. Health Risk Management.* 1(3): 251-256.
- Kessler G, Friedman J (1998). Metabolism of fatty acids and glucose: correspondence. *Circ.* 98: 1350-1353.
- Khatid MN, Simkhada P, Goda D (2014). Cardioprotective effects of ghrelin in the heart. From gut to heart. *Heart Views.* 15(3): 74-76.
- Kim IM, Tilley DG, Chen J, Salazar NC, Whalen EJ, Violin JD (2008). Beta-blockers alprenolol and carvedilol stimulate beta-arrestin mediated EGFR transactivation. *PNAS (USA).* 105(38): 14555-60
- Kim IM, Wang Y, Park KM, Tang Y, Teoh JP, Wilson J (2014). B-arrestin-1-biased β_1 -adrenergic receptor signalling regulates microRNA processing. *Circ. Res.* 114(5): 833-844.
- King AL, Polhemus DJ, Bhushan S, Osuka H, Kondo K, Nicholson CK (2014). Hydrogen sulphide cytoprotective signalling is endothelial nitric oxide synthase-nitric oxide dependent. *PNAS.USA.* 111(8): 3182-3187.
- Kirchner A, Veliskova J, Velisek L (2006). Differential effects of low glucose concentration on seizures and epileptiform activity *in vivo* and *in vitro*. *Eur. J. Neurosci.* 33(6): 1512-22
- Kleinman JC, Donahue RP, Harris MI, Finucane KF, Madans JH, Brock DW (1988). Mortality among diabetics in a national sample. *Am. J. Epidemiol.* 128: 389-401.
- Kowaltowski AJ, De Souza-Pinto NC, Castilho RF, Vercesi AE (2009). Mitochondria and reactive oxygen species. *Free. Rad. Biol. Med.* 47(4): 333-343.
- Kveiborg B, Hermann TS, Major-Pedersen A, Christiansen B, Rask-Madsen C, Raunso J, Kaber L (2010). Metoprolol compared to carvedilol deteriorates insulin-stimulated endothelial function in patients with type 2 diabetes-a randomised study. *Cardiovasc. Diabetol.* 9:12 doi: 10.1186/1475-2840-9-21
- Kveiborg B, Major-Petersen A, Christiansen B, Torp-Pedersen C (2007). Carvedilol in the treatment of CHF: lessons from the carvedilol of metoprolol European Trial. *Vasc. Health Risk Manag.* 3(1): 31-37
- Lefer DJ (2007). A new gaseous signalling molecule emerges: cardioprotective role of hydrogen sulphide. *PNAS.USA* 104(46): 17901-17906.
- Lemkes BA, Hermanides J, Devries JH, Holleman F, Meijers JC, Hoekstra JB (2010). Hyperglycaemia: a prothrombotic factor? *J. Thromb. Haemost.* 8: 1663-1669
- Leonetti G, Egan CG (2012). Use of carvedilol in hypertension: an update. *Vasc. Health Risk Manag.* 8: 307-322
- Li X, Matta SM, Sullivan RD, Bahouth SW (2014). Carvedilol reverses cardiac insufficiency in AKAP5 knockout mice by normalising the activities of calcineurin and CaMKII. *Cardiovasc. Res.* 104(2):270-9
- Liu DG, Qiao XB, Du J, Yang CQ, Fang F, Ma ZZ (2007). Pathological study of diabetic cardiomyopathy. *Zhonghua Bing Li Xue Za Zhi.* 36(2): 801-804.
- Lowe DA, Degens H, Chen KD, Always SE (2000). GAPDH varies with age in glycolytic muscles of rats. *J. Gerontol. A. Biol. Sci. Med. Sci.* 55(3): B160-B164
- Luttrell LM, Maudsley S, Bohn LM (2015). Fulfilling the promise of "biased" G protein-coupled receptor agonism. *Mol. Pharmacol.* 88(3): 579-588.
- MacDonnell SM, Weissner-Thomas J, Kubo H, Hanscome M, Liu Q, Jeleel N (2009). CaMKII negatively regulates calcineurin-NFAT

- signalling in cardiac myocytes. *Circ. Res.* 105(4): 316-25
- Malhotra A, Begley R, Kang BP, Rana I, Liu J, Yang G (2005). PKC- ϵ -dependent survival signals in diabetic hearts. *Am. J. Physiol. Circ. Physiol.* 298(4): H1343-50
- Manev H (2009). The heart-brain connection begets cardiovascular psychiatry and neurology. *Cardiovasc. Psychiatri. Neurol.* 2009: 546737
- Masutani S, Little WC, Hasegawa H, Cheng H-J, Cheng C-P (2008). Restrictive left ventricular filling pattern does not result from increased left atrial pressure alone. *Circ.* 117: 1550-1554.
- Mikati MA, Abi-Habib RJ, El Sabban ME, Dbaibo GS, Kurdi RM, Kobeissi M (2003). Light at the end of the "tunnel"? Role of ceramide in seizure-induced programmed cell death. *Epileps. Curr.* 3(5): 157-158.
- Miki T, Yuda S, Kouzu H, Miura T (2013). Diabetic cardiomyopathy: pathophysiology and clinical outcomes. *Heart Fail. Rev.* 18(2): 149-166.
- Mousa TM, Liu D, Cornish KG, Zucker IH (2008). Exercise training enhances baroreflex sensitivity by an angiotensin II-dependent mechanism in CHF. *J. Appl. Physiol.* (Bethesda, MD, 1985) 104(3): 616-624.
- Munzel T, Diaber A, Ullrich V, Mulsch A (2005). Vascular consequences of eNOS uncoupling on the activity and expression of the soluble guanylyl cyclase and the cGMP-dependent protein kinase. *Arterioscler. Thromb. Vasc. Biol.* 25: 1551-1557.
- Muscogiuri G, Chavez AO, Gastaldelli A, Perego L, Tripodi D, Saad MJ (2008). The cross-talk between insulin and renin-angiotensin – aldosterone signalling system and its effect on glucose metabolism and diabetes prevention. *Curr. Vasc. Pharmacol.* 6(4): 301-312.
- Nacarelli GV, Lukas MA (2005). Carvedilol's anti-arrhythmic properties: therapeutic implications in patients with left ventricular dysfunction. *Clin. Cardiol.* 28(4): 165-75
- Neugebauer G, Neubert P (1991). Metabolism of carvedilol. *Eur. J. Drug Pharmacokin.* 16(4): 257-60.
- Nichols GA, Hillier TA, Erbey JR, Brown JB (2001). Congestive heart failure in type 2 diabetes: prevalence, incidence and risk factors. *Diabet. Car.* 24(9): 1614-1619.
- Nikolic V, Jankovic S, Velickovic-Radovanovic R, Apostolovic S, Stanojevic D, Stefanovic N (2013). Population pharmacokinetics of carvedilol in patients with CHF. *J. Pharmaceut. Sci.* 102(8): 2851-8
- Noma T, Lemaire A, Naga Prasad SV, Barki-Harrington L, Tilley DG, Chen J (2007). Beta-arrestin-mediated beta-1-adrenergic receptor transactivation of the EGFR confers cardioprotection. *J. Clin. Invest.* 117(9): 2445-2458.
- Oikawa A, Siragura M, Quaini F, Mangialardi G, Katore RG, Caporali A (2010). Diabetes mellitus induces bone marrow microangiopathy. *Arterioscler. Thromb. Vasc. Biol.* 30: 498-508
- Ojji DB (2011). Diabetic cardiomyopathy: recent advances in the pathogenesis, prevention and management of type 2 diabetes and its complications. *Prof. Mark Zimening (Ed.) ISBN: 978-953-307-597-6 InTech*
- Okumura K, Kato H, Honio O, Breitling S, Kuebler VVM, Sun M (2015). Carvedilol improves biventricular fibrosis and function in experimental pulmonary hypertension. *J. Mol. Med. (Berlin).* 93(6): 663-674.
- Opie LH, Knuuti J (2009). The adrenergic-fatty acid load in heart failure. *J. Am. Coll. Cardiol.* 54(18): 1637-46+
- Oriaifo SE, Oriaifo N, Okogbenin EO, Omogbai EKI (2015). Metformin, cannabinoids and artesunate: convergent mechanisms in cardiometabolic and neuropsychiatric disorders. *Int. Res. J. Pharm. Pharmacol.* 5(2)
- Oriaifo SE, Oriaifo N, Omogbai EKI (2015). Metformin and calorie restriction modulate gene-environment interaction to prevent premature senescence. *Int. Res. J. Pharm. Pharmacol.* 5(1): 8-20.
- Packer M (1990). Abnormalities of diastolic function as potential cause of exercise intolerance in chronic heart failure. *Circ.* 81(2):78-86.
- Packer M, Bristow MR, Cohn JN, Colucci WS, Fowler MB, Gilbert EM (1996). The effect of carvedilol on morbidity and mortality in patients with CHF. U.S. Carvedilol Heart Failure Study Group. *N. Engl. J. Med.* 344(21): 1349-56.
- Packer M, Carson P, Elkayam U, Koustam MA, Moe G, O'Connor C (2013). Effect of amlodipine on the survival of patients with severe chronic heart failure due to non-ischaemic cardiomyopathy: results of the PRAISE 2 study (Prospective Randomised Amlodipine Survival Evaluation). *JACC Heart Fail.* 1(4): 308-314.
- Packer M, Coats AJ, Fowler MB, Katus HA, Krum H, Mohacsi P, Bouleau JL (2001). Carvedilol Prospective Randomised Cumulative Survival (CORPENICUS) Study Group: Effect of carvedilol on survival in severe chronic heart failure. *N. Engl. J. Med.* 344(22): 1651-1658.
- Palazzuoli A, Carreira A, Calabria P, Puccetti L, Pastorelli M, Pasqui AL (2004). Effect of carvedilol therapy on restrictive diastolic filling pattern in CHF. *Am. Heart J.* 147(1): E2
- Park S, Bivona BJ, Ford (Jnr) SM, Xu S, Kobori H, de Garavilla L (2013). Direct evidence for intrarenal chymase-dependent angiotensin II formation on the diabetic renal microvasculature. *Hypertens.* 61(2): 465-471.
- Passos JF, Saretzki G, Ahmed S, Nelson G, Richter T, Peters H (2007). Mitochondrial dysfunction accounts for the stochastic heterogeneity in telomere-dependent senescence. *PLoS BIOL.* 5(5): doi: 10.1371/journal.pbio.0050110
- Patel PA, Tilley DG, Rockman HA (2008). Beta-arrestin-mediated signalling in the heart. *Circ.* 117(11): 1725-1729.
- Pedersen ME, Cockcroft JR (2007). The vasodilating beta-blockers. *Curr. Hypertens. Rep.* 9(4): 267-277.
- Pereira GC, Silva AM, Diogo CV, Carvalho FS, Monteiro P, Oliveira RJ (2015). Drug-induced cardiac mitochondrial toxicity: from doxorubicin to carvedilol. *Curr. Pharmaceut. Design.* 17(20): 2113-2129
- Pereira GC, Silva AM, Diogo CV, Carvalho FS, Monteiro P, Oliveira PJ (2011). Drug-induced cardiac mitochondrial toxicity and protection: from doxorubicin to carvedilol. *Curr. Pharmaceut. Design.* 17: 2113-2129.
- Picatoste B, Ramirez E, Caro-Vadillo A, Iborra C, Egido J, Tunon J (2013). Sitagliptin reduces cardiac apoptosis, hypertrophy and fibrosis primarily by insulin-dependent mechanisms in experimental type 2 diabetes. Potential roles of GLP-1 isoforms. *PLoS One.* 8(10): e78330 doi: 10.1371/journal.pone.0078330.
- Pinamonti B, Di Lenarda A, Sinagra G, Camerinin F (1993). Restrictive left ventricular filling pattern in dilated cardiomyopathy assessed by Doppler echocardiography: clinical, echocardiographic and haemodynamic correlations and prognostic implications. *Heart Muscle Disease Study Group. J. Am. Coll. Cardiol.* 22(3): 808-815.
- Poole-Wilson PA, Swedberg K, Cleland JG, Di Lenarda A, Hanrath P, Komajda M (2003). Comparison of carvedilol and metoprolol on clinical outcomes in patients with CHF: The Carvedilol Or Metoprol European Trial (COMET). *Lancet.* 362(9377): 7-13.
- Poornima IG, Parikh P, Shannon RP (2006). Diabetic cardiomyopathy: the search for a unifying hypothesis. *Circ. Res.* 98: 596-605.
- Povsic TJ, Kohout TA, Lefkowitz RJ (2003). Beta-arrestin mediated IGF-1 activation of PI3K and anti-apoptosis. *J. Biol. Chem.* 278(5): 51334-51339.
- Predmore BL, Alendy MJ, Ahmed KI, Leeuwenburgh C, Julian D (2010). The hydrogen sulphide signalling system: changes during aging and the benefits of calorie restriction. *Age.* 32(4): 467-481.
- Qi Y, Xu Z, Zhu Q, Thomas C, Kumar R, Feng H (2013). Myocardial loss of IRS1 and IRS2 causes heart failure and is controlled by p38 MAPK during insulin resistance. *Diabetes.* 62(11): 3887-3900.
- Ramzan R, Weber P, Linne U, Vogt S (2013). GAPDH: the missing link between glycolysis and mitochondrial oxidative phosphorylation. *Biochem. Soc. Trans.* 41(5): 1294-1297.
- Razeghi P, Young ME, Alcorn JL, Moravec CS, Frazier OH, Taegtmeier H (2001). Metabolic gene expression in fetal and failing human heart. *Circ.* 104: 2923-2931.
- Rebsia N-S, Dhalla N-S (2010). Mechanism of the beneficial effects of beta-adrenoceptor antagonists in CHF. *Expt. Clin. Cardiol.* 15(4): e86-e95.
- Reddy PVK, Reddy IK, Goud ES (2014). Development and validation of UPLC method for determination of carvedilol in carvidex tablets.

- World J. Pharmac. Pharmaceutic. Sci. 3(9): 800-807
- Refsgaard J, Thomsen C, Andreason F, Gatzsche O (2002). Carvedilol does not alter the insulin sensitivity inpatients with CHF. *Eur. J. Heart. Fail.* 4: 445-453.
- Richter EA, Hargreaves M (2013). Exercise, GLUT 4, and skeletal muscle glucose uptake. *Physiol. Rev.* 93(3): 993-1017
- Ritz E (2005). Reduction of microalbuminuria by β -blockers. Beyond RAS blockade. *Hypertens.* 46: 1254-1255.
- Ritz K, van Buchem MA, Daemen MJ (2013). The heart-brain connection: mechanistic insights and models. *Neth. Heart J.* 21(2): 55-57.
- Rosa CM, Xavier NF, Henrique Campos D, Fernandes AA, Cezar MD, Martinez PE (2013). Diabetes mellitus activates foetal gene programme and intensifies cardiac remodelling and oxidative stress in aged spontaneously hypertensive rats. *Cardiovasc. Diabetol.* 12: 152 doi: 10.1186/1475-2840-12-152
- Rubler S, Dlugash J, Yuceoglu YZ, Kumrah T, Branwood AW, Grishman A (1972). A new type of cardiomyopathy associated with diabetic glomerulosclerosis. *Am. J. Cardiol.* 30(6): 595-602.
- Sag CM, Wadsack DP, Khabbazzadeh S, Abesser M, Grefe C, Neumann K (2009). CaMKII contributes to cardiac arrhythmogenesis in heart failure. *Circ. Heart Fail.* 2(6): 664-675.
- Sahin E, Colla S, Liessa M, Mosslehi J, Muller EL, Guo M (2011). Telomere dysregulation induces metabolic and mitochondrial compromise. *Nature.* 470(7334): 359-365.
- Santos DL, Moreno AJ, Leino RL, Froberg MK, Wallace KB (2002). Carvedilol protects against doxorubicin-induced mitochondrial cardiomyopathy. *Toxicol. Appl. Pharmacol.* 185(3): 218-27
- Schauwecke PE (2012). The effects of glycaemic control on seizures and seizure-induced excitotoxic cell death. *BMC Neurosci.* 13: 94 doi: 10.1186/1471-2202-13-94.
- Schwarz E, Prabakaran S, Whitfield P, Major H, Leweke FM, Koethe D (2008). High throughput lipidomic profiling of schizophrenic and bipolar disorder brain tissue reveal alteration of free fatty acids, phosphatidylcholines and ceramides. *J. Proteom. Res.* 7(10): 4266-4277.
- Schwechter EM, Veliskova J, Velisek L (2003). Correlation between extracellular glucose and seizure susceptibility in adult rats. *Ann. Neurol.* 53(1): 91-101
- Seferovic P, Paulus WJ (2015). Clinical diabetic cardiomyopathy: a two-faced disease with restrictive and dilated phenotypes. *Eur. Heart J.* <http://dx.org/10.1093/eurheartj/ehv134>
- Shimada K, Hirano E, Kimura T, Fujita M, Kashimoto C (2012). Carvedilol reduces the severity of atherosclerosis in apolipoprotein-E deficient mice via reducing superoxide production. *Expt. Biol. Med. (Maywood).* 237(9): 1039-1044.
- Silke B (2006). Beta-blockade in CHF: pathophysiological considerations. *Eur. Heart J. Suppl.* C13-C18.
- Singh A, Garg V, Gupta S, Kulkarni SK (2002). Role of anti-oxidants in chronic fatigue syndrome in mice. *Indian J. Expt. Biol.* 40: 1240-1244.
- Singh VP, Baker KM, Kumar R (2008_A). Activation of the intracellular renin-angiotensin system in cardiac fibroblasts by high glucose: role in extra-cellular matrix production. *AM. J. Physiol. Heart Circ. Physiol.* 294(4): H1675-84.
- Singh VP, Le B, Khode R, Baker KM, Kumar R (2008_B). Intracellular angiotensin II production in diabetic rats is correlated with cardiomyocyte apoptosis, oxidative stress and cardiac fibrosis. *Diabetes.* 57(12): 3297-3306
- Smith AR, Visioli E, Frei B, Hagen TM (2006). Age-related changes in endothelial nitric oxide synthase phosphorylation and nitric oxide dependent vasodilation: evidence for a novel mechanism involving sphingomyelinase and ceramide-activated phosphatase 2A. *Aging Cell.* 5(5): 391-400
- Solal AC, Jondeau G, Beauvais F, Berdeaux A (2004). Beneficial effects of carvedilol on ACE I activity and renin plasma levels in patients with CHF. *Eur. J. Heart. Fail.* 6: 463-466.
- Solang L, Malmberg K, Ryden L (1999). Diabetes mellitus and congestive heart failure. Further knowledge needed. *Eur. Heart J.* 20(11): 789-795.
- Stanford KI, Goodyear LJ (2014). Exercise and type 2 diabetes: molecular mechanisms regulating glucose uptake in skeletal muscle. *Adv. Physiol. Edu.* 38(4): 308-314.
- Steiner JC, Murphy EA, McClellan JL, CarMichael MD, Davis JM (1985). Exercise training increases mitochondrial biogenesis in the brain. *J. Appl. Physiol.* 111(4): 1066-1071.
- Stroszneider RP, Dziewulska JH (2005). Effect of carvedilol on neuronal survival and PARP activity in hippocampus after transient forebrain ischaemia. *Acta Neurobiol. Expt.* 62(2): 137-43
- Sun Q, Yue P, Ying Z, Cardounel A-J, Brook RD, Devlin R (2008). Air pollution exposure potentiates hypertension through ROS-mediated activation of Rho/ROCK. *Arterioscl. Thromb. Vasc. Biol.* 28(10): 1760-1766.
- Szabo C (2012). Roles of hydrogen sulphide in the pathogenesis of diabetic mellitus and its complications. *Antioxid. Redox. Signal.* 17: 68-80.
- Taira CA, Carranza A, Mayer M, Carla DV, Opezzo JAW, Hocht C (2008). Therapeutic implications of beta-adrenergic receptor pharmacodynamics properties. *Curr. Clin. Pharmacol.* 3(3): 174-184
- Tilley DG (2011). G-protein-dependent and G-protein-independent signalling pathways and their impact on cardiac function. *Circ. Res.* 109: 217-230.
- Torp-Pedersen C, Cleland JG, Di Lenarda A, Hanrath P, Komajda M (2005). Carvedilol reduces the risk for new onset of diabetes-related adverse events in HF compared to metoprolol. Results of the COMET Study (Abstract). *JACC.* 45(Suppl. 1): 187A
- Torp-Pedersen C, Metra M, Charlesworth A, Spark P, Lukas MA, Poole-Wilson PA (2007). Effect of metoprolol and carvedilol on pre-existing and new onset diabetes in patients with chronic heart failure. *Heart.* 93(8): 968-973.
- Vanderhoff BT, Ruppel HM (1998). Carvedilol: the new role of beta-blockers in congestive heart failure. *Am.Fam. Physician.* 58(7): 1627-1634.
- Vanzelli A, Medeiros A, Rolim N, Bartholomeu JB, Cunha TF, Bechara LG (2013). Integrative effect of carvedilol and aerobic exercise therapies on improving cardiac contractility and remodelling in HF mice. *PLoS One* 8(5): e62452 doi:10.1371/journal.pone.0062452.
- Verma U, Bano G, Lal M, Kapoor B, Sharma P, Sharma R (2004). Antihypertensive efficacy of carvedilol and amlodipine in patients with mild to moderate hypertension-a comparative study. *JK Sci.* 6(4): 193-196.
- Violin JD, Lefkowitz RJ (2007). Allosterism and collateral efficacy: B-arrestin-biased ligands at seven-transmembrane receptors. *Trends Pharmacol. Sci.* 28(8): 416-422.
- Vora A, Kulkarni S (2014). Pharmacotherapy to reduce arrhythmic mortality. *Indian Heart J.* 66(SI): S113-S119.
- Wallhaus TR, Taylor M, DeGrado TR, Russel DC, Stanko P, Nickles RJ (2001). Myocardial free fatty acid and glucose use after carvedilol treatment in patients with CHF. *Circ.* 103: 2441-2446.
- Wan Y-Z, Gao P, Zhou S, Zhang Z-Q, Hao D-L, Lian L-S (2014). SIRT1-mediated epigenetic downregulation of plasminogen activator inhibitor-1 prevents vascular endothelial replicative senescence. *Aging Cell.* 13: 890-899.
- Wang J, Ono K, Dickstein DL, Ameta-Cruz I, Zhao W, Qian X (2011). Carvedilol as a potential novel agent in the treatment of Alzheimer's disease. *Neurobiol. Aging.* 32(12): 2321.
- Watanabe K, Aruzal W, Sari FR, Arumugam S, Thandavarayan R, Suzuki K (2011). The role of carvedilol in the treatment of dilated and anthracycline-induced cardiomyopathy. *Pharmaceuticals.* 4: 770-781.
- Watanabe K, Ohta Y, Nakazawa M, Higuchi H, Hasegawa G, Naito M (2000). Low-dose carvedilol inhibits progression of heart failure in rats with dilated cardiomyopathy. *BJP.* 130(7): 1489-1495.
- Wei YH, Ma YS, Lee HC, Lee CE, Lu CY (2001). Mitochondrial theory of ageing matures-roles of mtDNA mutation and oxidative stress in human ageing. *Zhonghua Yi Xue Za Zhi (Taipei).* 64(5): 259-270.
- Wei YH, Wu SB, Ma YS, Lee HC (2009). Respiratory function decline and DNA mutation in mitochondria, oxidative stress and altered gene expression during ageing. *Chang Gung Med. J.* 32(2): 113-132.

- Wilinski B, Wilinski J, Somogyi E, Piotrowska J, Geralska M, Macura B (2011). Carvedilol induces endogenous hydrogen sulphide tissue concentration changes in mouse organs. *Folia Biol. (Krakow)*. 59(3-4): 151-155.
- Wilinski B, Wilinski J, Somogyi E, Piotrowska J, Opoka W (2011). Metformin raises hydrogen sulphide tissue concentration in various mouse organs. *Pharmacol. Rep.*. 65(3): 737-42.
- Wilkins BJ, Molkentin JD (2004). Calcium-calcineurin signalling in the regulation of cardiac hypertrophy. *Biochem. Biophys. Res. Commun.* 322(4): 1178-1191.
- Wisler JW, DeWire SM, Whalen EJ, Violin JD, Drake MT, Ahn S (2007). A unique mechanism of beta-blocker action: carvedilol stimulates β -arrestin signalling. *PNAS (USA)*. 104(4): 16657-16662.
- Xiong S, Salazar G, Patrushev N, Ma M, Forouzanmehr F, Hilenski L (2013). Peroxisome proliferator-activated receptor gamma co-activator-1 alpha is a central negative regulator of vascular senescence. *Arterioscler. Thromb. Vasc. Biol.* 33(5): 988-98.
- Yamagata K, Ichinose S, Tagami M (2004). Amlodipine and carvedilol prevent cytotoxicity in cortical neurons from stroke-prone SHR. *Hypertens.* 27(4): 271-80.
- Yang XJ, Tang YD, Ran YM, Zhang P, Zhou YW, Wang PH (2003). Comparative effects of carvedilol and losartan alone and in combination for preventing left ventricular remodelling after acute myocardial infarction in rats. *Circ. J.* 67(2): 159-162.
- Yang Y, Tang Y, Ruan Y, Wang Y, Gao R, Chen J (2003). Comparison of metoprolol with low, middle and high doses of carvedilol in prevention of post-infarction left ventricular remodelling in rats. *Japanese Heart J.* 44(6): 979-988.
- Ying Z, Yue P, Xu X, Zhong M, Sun O, Mikolaj M, Wang IM (2009). Air pollution and cardiac remodelling: a role for Rho_A /Rho-kinase. *Am. J. Physiol. Heart Circ. Physiol.* 296(5): H1540-50.
- Zdychova J, Komers R (2005). Emerging role of Akt kinase/PKB signalling in pathophysiology of diabetes and its complications. *Physiol. Rev.* 54(1): 1-16.
- Zhang G, Yin X, Qi Y, Pendyala L, Chen J, Hou D (2010). Ghrelin and cardiovascular diseases. *Curr. Cardiovasc. Res.* 6(1): 62-70.
- Zhou Q, Xiao J, Jiang D, Wang R, Vembaiyan K, Wang A (2011). Carvedilol and its new analogs suppress arrhythmogenic store overload-induced Ca^{2+} release. *Nat. Med.* 17: 1003-1009
- Zhu J-N, Fu Y-H, Lin Q-X, Huang S, Guo LL, Zhang M-Z (2013). Smad inactivation and MiR-29b upregulation mediate the effect of carvedilol on attenuating the acute myocardium infarction-induced myocardial fibrosis in rat. *PLoS One.* 8(9): e75557.
- Zou MH, Shi C, Cohen RH (2002). Oxidation of the zinc-thiolate complex and uncoupling of eNOS by peroxynitrite. *J. Clin. Invest.* 109: 812-826.
- Zucker IH (2007). Novel mechanisms of sympathetic regulation in chronic heart failure. *Hypertens.* 48: 1005-1011.